

VIZIO

BLU-RAY™ PLAYER WITH INTERNET APPS

VBR121 – USER MANUAL



This product qualifies for ENERGY STAR in the “factory default” setting and this is the setting in which power savings will be achieved. Changing the factory default picture settings or enabling other features will increase power consumption that could exceed the limits necessary to qualify for ENERGY STAR rating.

Welcome

Thank You for Choosing VIZIO

And congratulations on your new VIZIO Blu-ray Player.

To get the most out of your new VIZIO product, read these instructions before using your product and retain them for future reference. Be sure to inspect the package contents to ensure there are no missing or damaged parts.

Product Registration

To purchase or inquire about accessories and installation services for your VIZIO product, visit our website at www.VIZIO.com or call toll free at 1-888-849-4623.

We recommend that you either:

- Register your VIZIO product at www.VIZIO.com
- Complete and mail the enclosed registration card

Extended Warranties

For peace of mind, and to protect your investment beyond the standard warranty, VIZIO offers on-site extended warranty service plans. These plans provide additional coverage during the standard warranty period. To purchase an extended warranty service plan, visit www.VIZIO.com.

When Reading this Manual



When you see this symbol, please read the accompanying important warning or notice. It is intended to alert you to the presence of important operating instructions.



When you see this symbol, please read the accompanying helpful tip.

My Product Information



Enter your product information here for easy reference:

Model Number: _____

Serial Number: _____

Date of Purchase: _____

VIZIO recommends you attach your sales receipt to this manual for safekeeping.

Attach Sales Receipt Here

Important Safety Instructions

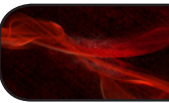
Your Blu-ray Player is designed and manufactured to operate within defined design limits. Misuse may result in electric shock or fire. To prevent your Blu-ray Player from being damaged, the following instructions should be observed for the installation, use, and maintenance of your Blu-ray Player. Read the following safety instructions before operating your Blu-ray Player. Keep these instructions in a safe place for future reference.

- To reduce the risk of electric shock or component damage, switch off the power before connecting other components to your Blu-ray Player.
- Read these instructions.
- Keep these instructions.
- Heed all warnings.
- Follow all instructions.
- Do not use this apparatus near water.
- Clean only with a dry cloth.
- Do not block any ventilation openings. Install in accordance with the manufacturer's instructions.
- Do not install near any heat sources such as radiators, heat registers, stoves, or other apparatus (including amplifiers) that produce heat.
- Do not defeat the safety purpose of the polarized or grounding-type plug. A polarized plug has two blades and a third grounding prong. The wide blade or the third prong are provided for your safety. If the provided plug does not fit into your outlet, consult an electrician for replacement of the obsolete outlet.
- Protect the power cord from being walked on or pinched, particularly at plugs, convenience receptacles, and the point where they exit from the apparatus.
- Only use attachments/accessories specified by the manufacturer.
- Use only with the cart, stand, tripod, bracket, or table specified by the manufacturer, or sold with the apparatus. When a cart is used, use caution when moving the cart/apparatus combination to avoid injury from tip-over.
- Unplug this apparatus during lightning storms or when unused for long periods of time.
- Refer all servicing to qualified service personnel. Servicing is required when the apparatus has been damaged in any way, such as when the power-supply cord or plug is damaged, liquid has been spilled or



objects have fallen into the apparatus, the apparatus has been exposed to rain or moisture, does not operate normally or has been dropped.

- Unplug the power cord before cleaning your Blu-ray Player.
- When moving your Blu-ray Player from an area of low temperature to an area of high temperature, condensation may form in the housing. Wait before turning on your Blu-ray Player to avoid causing fire, electric shock, or component damage.
- A distance of at least three feet should be maintained between your Blu-ray Player and any heat source, such as a radiator, heater, oven, amplifier etc. Do not install your Blu-ray Player close to smoke. Operating your Blu-ray Player close to smoke or moisture may cause fire or electric shock.
- Slots and openings in the back and bottom of the cabinet are provided for ventilation. To ensure reliable operation of your Blu-ray Player and to protect it from overheating, be sure these openings are not blocked or covered. Do not place your Blu-ray Player in a bookcase or cabinet unless proper ventilation is provided.
- Never push any object into the slots and openings on your Blu-ray Player cabinet. Do not place any objects on the top of your Blu-ray Player. Doing so could short circuit parts causing a fire or electric shock. Never spill liquids on your Blu-ray Player.
- Your Blu-ray Player should be operated only from the type of power source indicated on the label. If you are not sure of the type of power supplied to your home, consult your dealer or local power company.
- Do not apply pressure or throw objects at your Blu-ray Player. This may compromise the integrity of the display. The manufacturer's warranty does not cover user abuse or improper installations.
- The power cord must be replaced when using different voltage than the voltage specified. For more information, contact your dealer.
- When connected to a power outlet, power is always flowing into your Blu-ray Player. To totally disconnect power, unplug the power cord.
- The lightning flash with arrowhead symbol within an equilateral triangle is intended to alert the user to the presence of un-isolated, dangerous voltage within the inside of your Blu-ray Player that may be of sufficient magnitude to constitute a risk of electric shock to persons.
- Do not overload power strips and extension cords. Overloading can result in fire or electric shock.
- The wall socket should be installed near your Blu-ray Player and easily accessible.



- Only power of the marked voltage can be used for your Blu-ray Player. Any other voltage than the specified voltage may cause fire or electric shock.
- Do not touch the power cord during lightning. To avoid electric shock, avoid handling the power cord during electrical storms.
- Unplug your Blu-ray Player during a lightning storm or when it will not be used for long period of time. This will protect your Blu-ray Player from damage due to power surges.
- Do not attempt to repair or service your Blu-ray Player yourself. Opening or removing the back cover may expose you to high voltages, electric shock, and other hazards. If repair is required, contact your dealer and refer all servicing to qualified service personnel.
- **WARNING:** Keep your Blu-ray Player away from moisture. Do not expose your Blu-ray Player to rain or moisture. If water penetrates into your Blu-ray Player, unplug the power cord and contact your dealer. Continuous use in this case may result in fire or electric shock.
- Do not use your Blu-ray Player if any abnormality occurs. If any smoke or odor becomes apparent, unplug the power cord and contact your dealer immediately. Do not try to repair your Blu-ray Player yourself.
- Avoid using dropped or damaged appliances. If your Blu-ray Player is dropped and the housing is damaged, the internal components may function abnormally. Unplug the power cord immediately and contact your dealer for repair. Continued use of your Blu-ray Player may cause fire or electric shock.
- Do not install your Blu-ray Player in an area with heavy dust or high humidity. Operating your Blu-ray Player in environments with heavy dust or high humidity may cause fire or electric shock.
- Follow instructions for moving your Blu-ray Player. Ensure that the power cord and any other cables are unplugged before moving your Blu-ray Player.
- When unplugging your Blu-ray Player, hold the AC/DC power adapter, not the cord. Pulling on the power cord may damage the wires inside the cord and cause fire or electric shock. When your Blu-ray Player will not be used for an extended period of time, unplug the power cord.
- To reduce risk of electric shock, do not touch the connector with wet hands.
- Insert batteries in accordance with instructions. Incorrect polarities may cause the batteries to leak which can damage the remote control or injure the operator. Do not expose batteries to excessive heat such as

sunshine, fire or the like.

- If any of the following occurs, contact the dealer:
 - The power cord fails or frays.
 - Liquid sprays or any object drops into your Blu-ray Player.
 - Your Blu-ray Player is exposed to rain or other moisture.
 - Your Blu-ray Player is dropped or damaged in any way.
 - The performance of your Blu-ray Player changes substantially.
- This apparatus shall not be exposed to dripping or splashing and no objects fill with liquids, such as vases, shall be placed on the apparatus.
- The mains plug or appliance coupler is used as the disconnect device, the disconnect device shall remain readily operable.
- **CAUTION** - These servicing instructions are for use by qualified service personnel only. To reduce the risk of electric shock, do not perform any servicing other than that contained in the operating instructions unless you are qualified to do so.



The lightning flash with arrowhead symbol within an equilateral triangle is intended to alert the user to the presence of uninsulated **DANGEROUS VOLTAGE** within the product's enclosure that may be of sufficient magnitude to constitute a risk of electrical shock to persons.

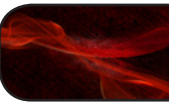
Caution

- This BD player has a laser system.
- Please note that hazardous radiation leakage may be caused if the player is misused in anyway.
- Do not defeat the safety interlocks.
- Do not open the case of the player. The laser light will become visible when the case is opened.

CLASS 1 Laser Product

Use of controls, adjustments or performance of procedures other than those specified herein may result in hazardous radiation exposure.

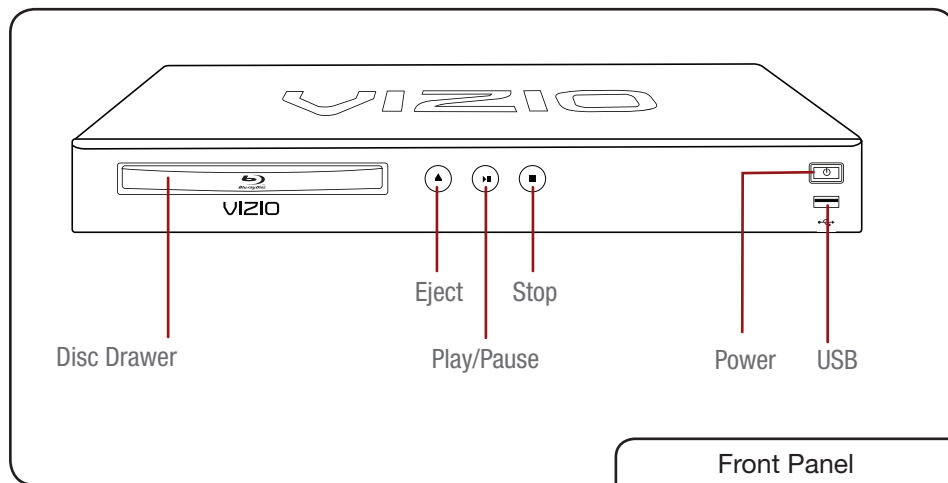
Controls and Connections	1	Changing the PCM Downsampling Rate	16
Front Panel	1	Adjusting the Digital Audio Output	17
Rear Panel	1	Activating or Deactivating Dynamic Range Control.....	17
Remote Control	2	Changing the Stereo Downmix Setting.....	18
Replacing the Batteries.....	3	Changing the On-Screen Menu Language	18
Installing the Blu-ray Player	4	Changing the Player's On-Screen Menu Language.....	18
Inspecting the Package Contents	4	Changing the Disc's Menu Language	19
Connecting the Player to an Electrical Outlet	4	Changing the Audio Language	19
Connecting the Player to Your TV	4	Changing the Subtitle Language	19
Connecting the Player to Your Home Audio System	5	Changing the BD-Live Settings.....	20
Connecting the Player to Your TV and Home Audio System with HDMI	6	Changing BD-Live Access	20
Setting Up Your Network Connection	7	Viewing BD-Live Storage Settings.....	21
Basic Operation	8	Erasing Blu-ray Memory Storage.....	21
Navigating the On-Screen Menu.....	8	Setting the Parental Controls	21
Playing a Disc.....	8	Setting the Parental Country.....	22
Basic Playback Functions.....	9	Activating or Deactivating the Parental Controls	22
Advanced Playback Functions	10	Setting the Parental Restriction Level.....	23
Viewing BD-Live Content	10	Changing the Parental Code.....	23
Viewing USB Media - Video and Audio.....	10	Changing the System Settings.....	24
Playing USB Photos and Audio	11	Activating or Deactivating Disc Autoplay.....	24
USB Media Playback Controls	12	Setting Auto Power Down.....	25
Viewing a Photo Slide Show	12	Setting the Screen Saver Duration	25
Adjusting the Slide Show Settings.....	13	Enabling or Disabling CEC Support.....	25
Adjusting the Player's Settings	14	Updating the Player's Firmware Via Your Home Network	26
Adjusting the Display Settings	14	Restoring the Player's Factory Defaults.....	26
Changing the Display Resolution.....	14	Adjusting the Network Settings	27
Adjusting the Aspect Ratio	15	Adjusting the Wired Settings	27
Activating Film Mode	15	Viewing the Info Screen	28
Adjusting the Deep Color Setting	15	Using Internet Apps	29
Adjusting the Audio Settings.....	16	Using the Netflix App	29
		Opening a Netflix Account.....	29



- Using the VUDU App 29
 - Opening a VUDU Account 29
 - Using VUDU to Watch a Movie..... 30
- Using the Pandora App..... 31
 - Opening a Pandora Account 31
 - Logging Into Your Pandora Account..... 32
 - Listening to Music Using Pandora..... 32
 - Thumbs Up and Thumbs Down..... 32
 - Additional Pandora Menu Options..... 33
- Using the HULU App..... 33
- Troubleshooting & Technical Support..... 34**
 - There is no power..... 34
 - Nothing happens when I press buttons on the remote. 34
 - My Blu-Ray or DVD disc does not play..... 34
 - I cannot connect the Player to my network. 34
 - The picture quality seems low. 34
 - I am having trouble with Internet Apps. 34
- Specifications 35**
- Limited Warranty 36**
- Legal & Compliance 37**

Before the first-time setup, take a few moments to familiarize yourself with the various controls and connections. This will make the setup process much faster and your experience with the player much more enjoyable!

Front Panel



Disc Drawer: Insert the disc here to play.

Eject: Press to open or close the disc drawer.

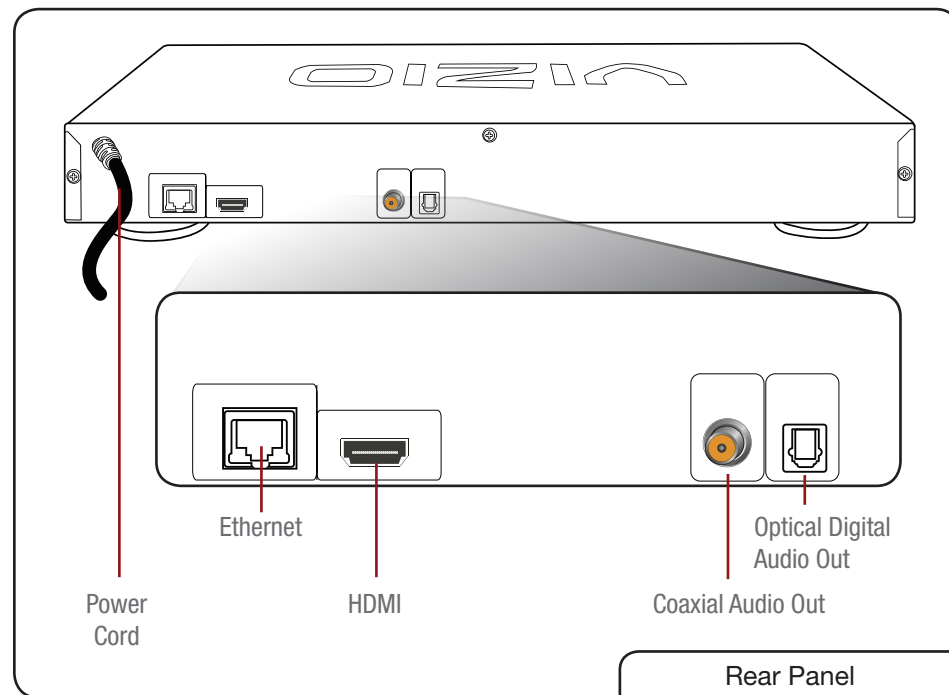
Play/Pause: Press to play or pause disc.

Stop: Press to stop disc playback.

Power/Standby: Touch to turn the player on/off.

USB: Connect USB thumb drive to play music or photos.

Rear Panel



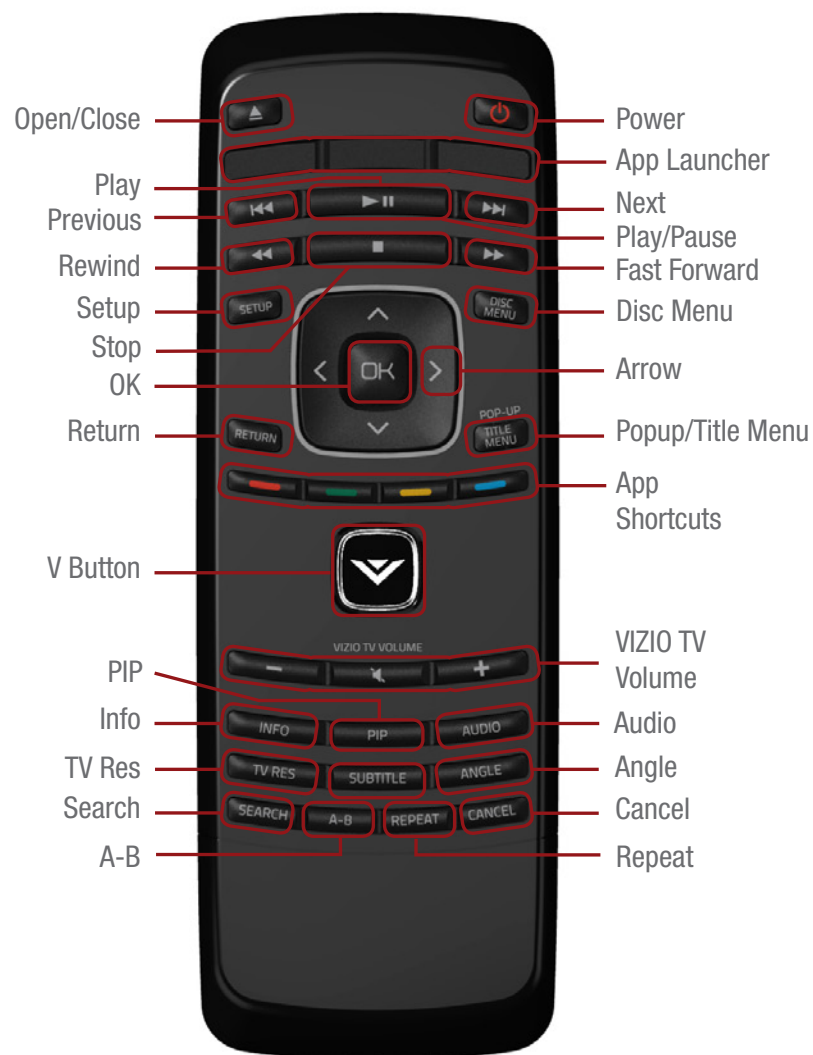
Power Cord: Connect to an electrical outlet.

Ethernet: Connect to your router or modem with an ethernet cable.

HDMI: Connect to your TV or home audio system with an HDMI cable.

Optical Digital Audio Out: Connect to a home audio system with an optical (SPDIF) cable.

Coaxial Audio Out: Connect to a home audio system with a coaxial (RCA) cable.



Remote - Front

Remote Control

Open/Close: Open or close the disc drawer.

Power: Turn Player on or off.

App Launchers: Quick launch App on button.

Previous: Go to the previous chapter or track.

Play/Pause: Start or pause playback.

Next: Go to the next chapter or track.

Rewind: Reverse playback. Press repeatedly to increase speed.

Stop: Stop playback.

Fast Forward: Advance playback. Press repeatedly to increase speed.

Setup: Open setup menu.

Disc Menu: Open disc menu.

OK: Select highlighted menu item.

Arrow: Navigate menu.

Return: Go back to the previous menu screen.

Popup/Title Menu: Open title menu while movie plays.

App Shortcuts: Control Internet Apps and disc functions (press Red button to exit Apps).

V Button: Return to the Player home screen.

VIZIO TV Volume: Increase, decrease, or mute volume on a VIZIO TV.

PIP: Enable picture-in-picture.*

Info: Open disc info window.

Subtitle: Change subtitle track.*

Audio: Change audio track.*

TV Res: Change the resolution output of the Player to match the resolution of your TV.

Angle: Select viewing angle.*

Repeat: Repeat playback of track*

A-B: Create a playback loop*

Search: Find specific title, chapter, or time.*

Cancel: Clear entered numbers/letters.

QWERTY Keypad: Use to enter numbers and letters. Hold down the **ALT** button to type a blue letter, number, or symbol.

*Compatible Blu-ray or DVD discs only.

Replacing the Batteries

1. Remove the battery cover by pressing gently on the remote and pushing the cover away.
2. Insert two AAA batteries into the remote control. Make sure that the (+) and (-) symbols on the batteries match the (+) and (-) symbols inside the battery compartment.
3. Replace the battery cover.

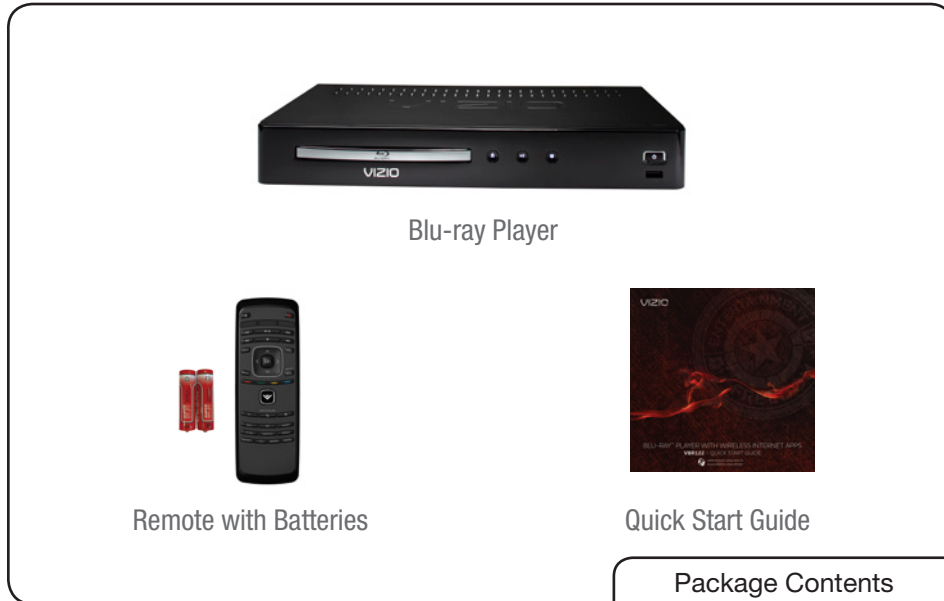


- Use only good quality batteries.
- Inserting the batteries incorrectly may result in cracking or leakage that may cause a fire or result in injury.
- Dispose of old or dead batteries in accordance with local hazardous waste regulations.
- Keep batteries away from children and pets.

Inspecting the Package Contents

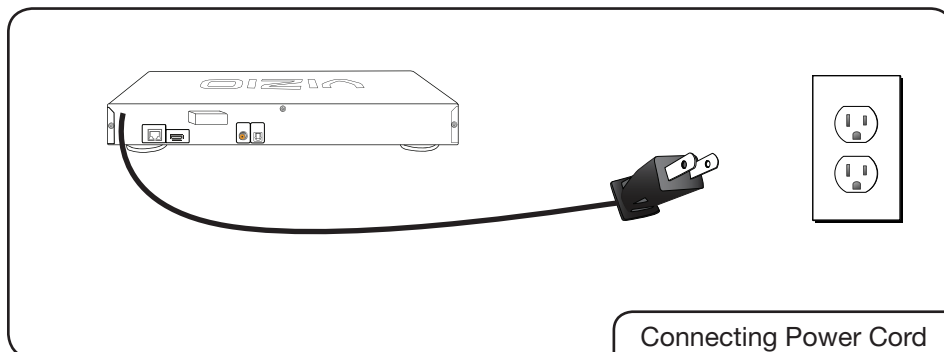
Before installing your new player, take a moment to inspect the package contents. Use the images below to ensure nothing is missing or damaged.

When you have completed your inspection, install the player.



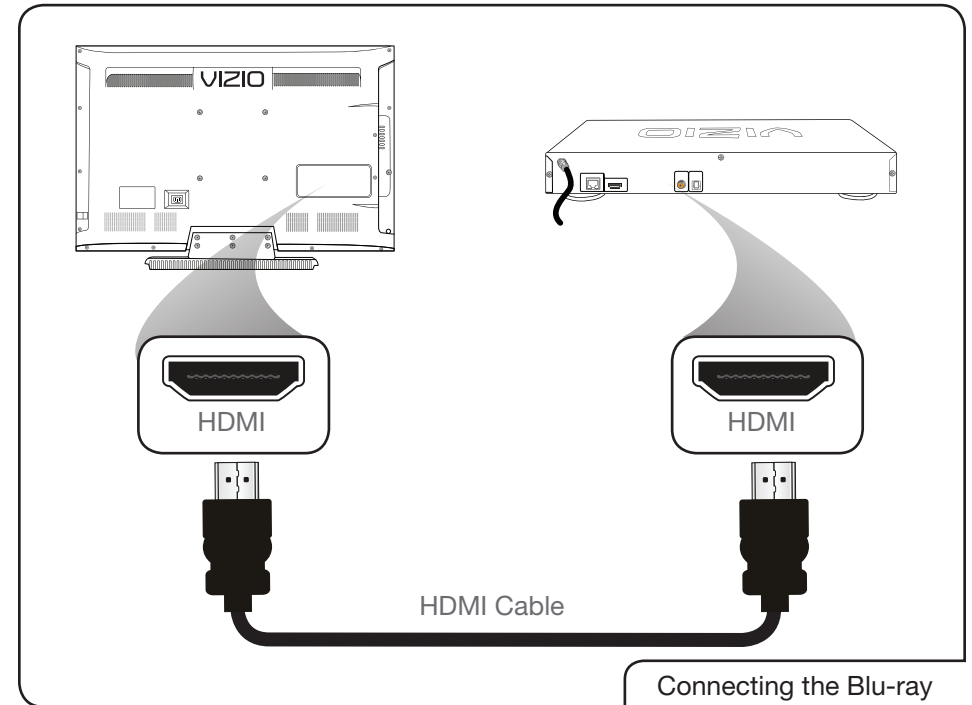
Connecting the Player to an Electrical Outlet

Your player must be connected to a power source in order to work. Connect the power cord to an electrical outlet as shown below:



Connecting the Player to Your TV

Your Blu-ray player is easily connected to your TV. Before you begin the installation, ensure your TV has an available HDMI port.



To connect the player to the TV:

1. Ensure both the TV and the player are off.
2. Connect the player and the TV using an HDMI cable (sold separately). Ensure each end of the cable is securely connected.
3. Turn the TV on.
4. Turn the player on by pressing the Power button on the remote, or by touching the Power control on the front of the player.
5. When you are ready to use the player, set the TV's input to the proper HDMI input. (Devices differ; see your TV's user manual for details on how to change the input source.)

Connecting the Player to Your Home Audio System

Your player has two digital audio ports: coaxial and optical. If your home audio system is equipped with one of these ports, you can connect it to your player so you can enjoy theater-style surround sound.



Remember: You still need to connect the player to your television to view video. See *Connecting the Player to Your TV* on page 4.

To connect the player to your home audio system:

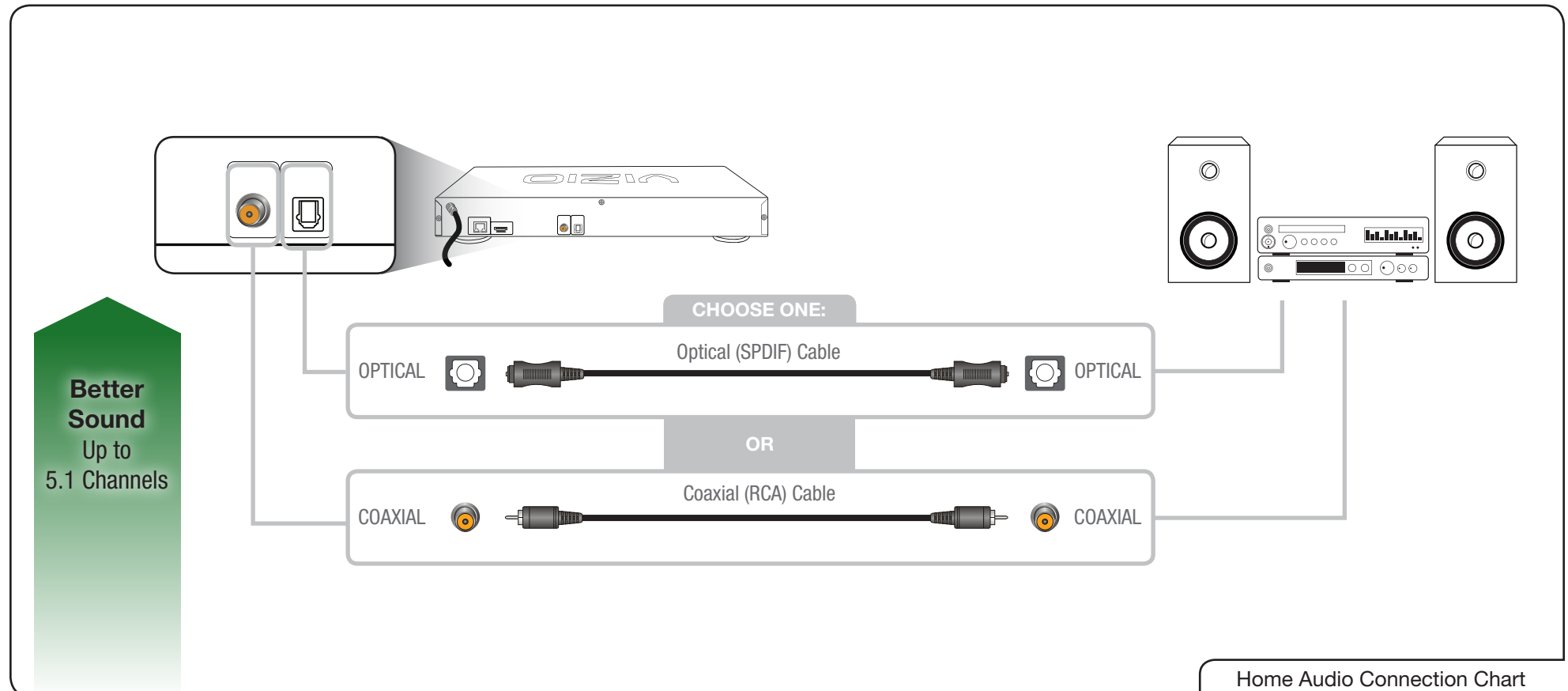
1. Ensure both your home audio system and the player are off.
2. Connect the player to the home audio system. Use the best available connection. See the *Home Audio Connection Chart* below.

3. Turn the player on by pressing the **Power** button on the remote, or by touching the **Power** control on the front of the player.
4. Turn your home audio system on.
5. When you are ready to use the player, set your home audio system's input to the player's connection. (Devices differ; see your audio system's user manual for details on how to change the input.)

If the player is correctly connected, you will hear audio from your home audio system speakers when a disc is played.



For best quality sound, connect your player to your home audio system using an HDMI cable. See the next page for instructions.

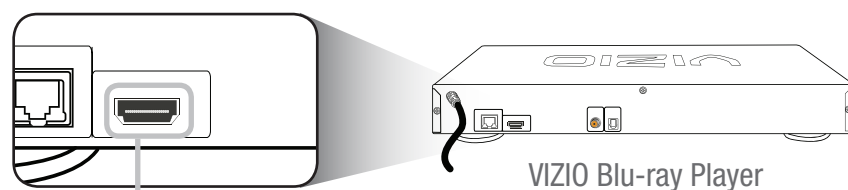


Connecting the Player to Your TV and Home Audio System with HDMI

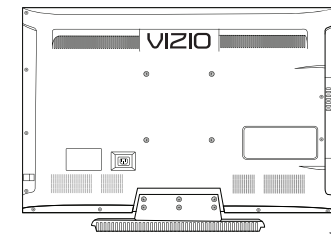
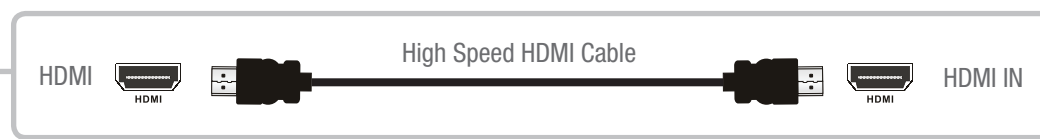
Your player can output high-definition digital audio via the HDMI port, enabling you enjoy up of 7.1 channels of surround sound using your home audio system.

To connect the player to your home audio system with HDMI:

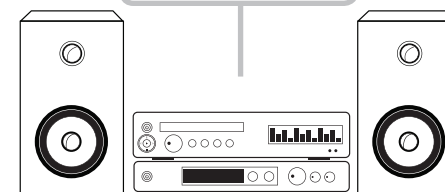
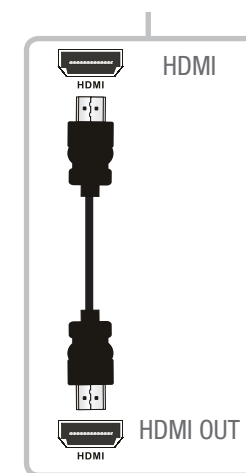
1. Ensure both your home audio system and the player are off.
2. Connect the player to the home audio system and TV as shown in the the HDMI Connection Chart below.
3. Turn the player on by pressing the **Power** button on the remote, or by touching the **Power** control on the front of the player.
4. Turn your TV and home audio system on.
5. When you are ready to use the player, set your home audio system's input to the player's connection. Set your TV's input to the proper HDMI connection.



**Best Sound
and Video**
Up to
7.1 Channels



Your TV



Home Audio Receiver

HDMI Connection Chart

Setting Up Your Network Connection

Your player is network-ready, and can be connected to your home network using the RJ45 (ethernet) connector on the back panel

Once you have connected to your home network and the Internet, you can use Internet Apps to deliver popular online content to your player.

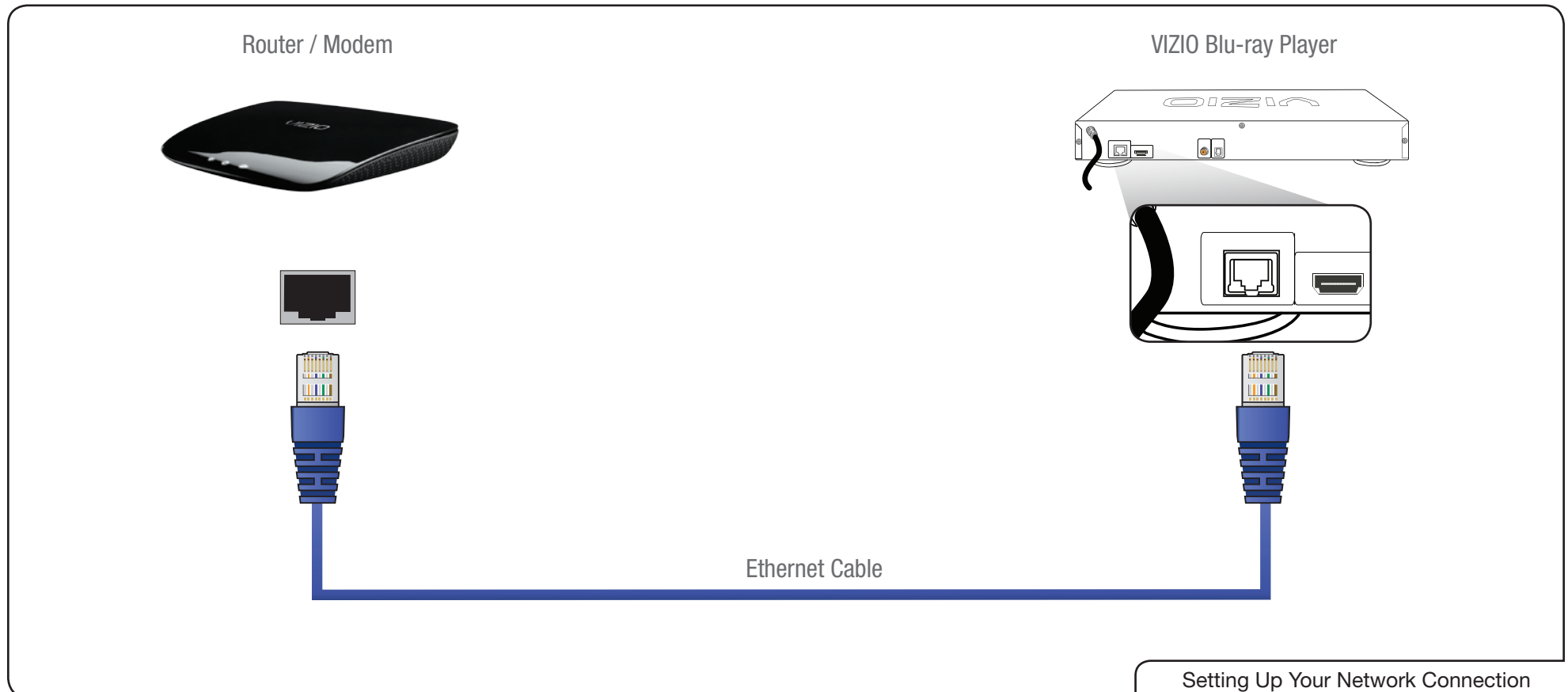


Ethernet cables are available from many retailers in lengths of up to 50 feet.

Connecting to A Wired Network

To connect to a wired network:

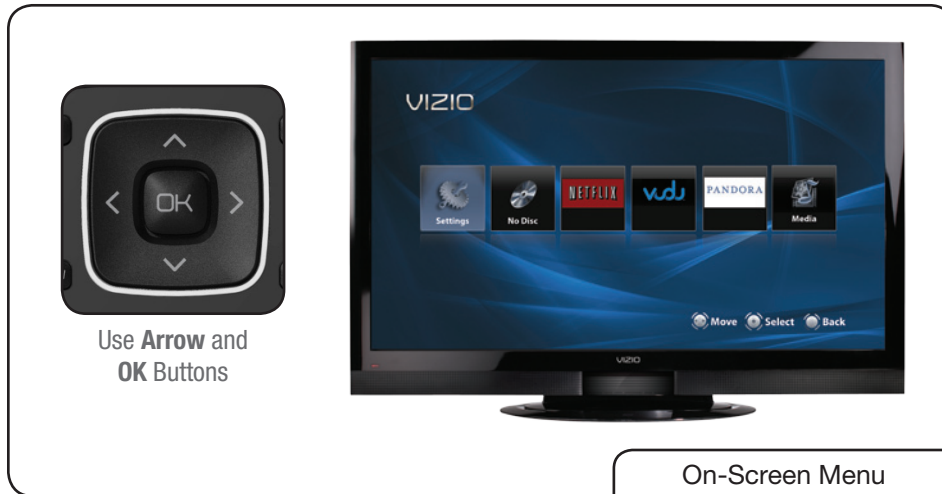
1. Ensure you have:
 - An ethernet cable long enough to connect the player to your router or modem
 - A router or modem with an available ethernet port
 - A high-speed internet connection
2. Connect your ethernet cable to the router and to the ethernet port on the back of the TV.
3. Turn on the player and your TV. The player detects the ethernet connection.



In this chapter, you will learn how to:

- Navigate the On-Screen Menu
- Play a Disc
- View USB Media

Navigating the On-Screen Menu



To highlight an icon or menu setting, press the **Arrow** buttons on the remote. The highlighted icon or menu setting will glow light blue.

To select an icon or menu setting, highlight the icon or menu setting and press **OK** button on the remote.



To go back to a previous screen, press the **RETURN** button.

Playing a Disc

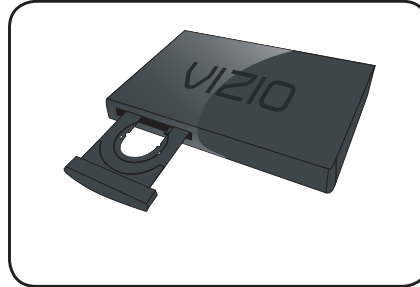
Your player can play several kinds of discs. Use this table to ensure your disc is compatible with the player:

Type of Disc	Logo
Blu-ray	
DVD Video	
Audio CD	
DVD-R DVD+R	
DVD-RW DVD+RW	

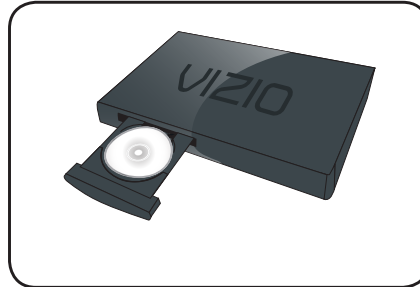
To play a disc:

1. Press the **Eject** button on the remote or touch the **Eject** control on the front of the player.

The disc tray opens.

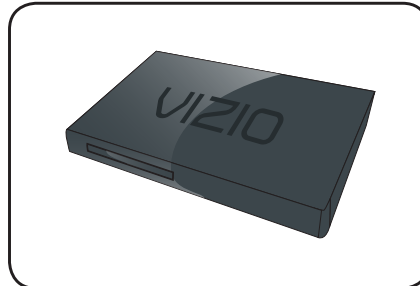


2. Insert your disc. Place the disc, label side up, into the disc tray.



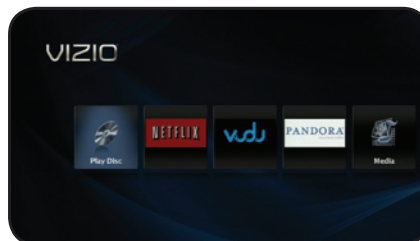
3. Press the **Eject** button on the remote or touch the **Eject** control on the front of the player.

The disc tray closes.



4. Using the **Arrow** buttons on the remote, highlight **Play Disc** and press **SELECT**.

The disc plays.



Basic Playback Functions

When playing a disc, you can use buttons on the remote to manipulate the playback in several ways:



Previous: Skip to last chapter or track.

Next: Skip to next chapter or track.

Rewind: Reverse playback. Press repeatedly to increase the speed. Speeds are x2, x4, x8, x16, x32, x64, and x128. Press **Play/Pause** to resume normal playback.

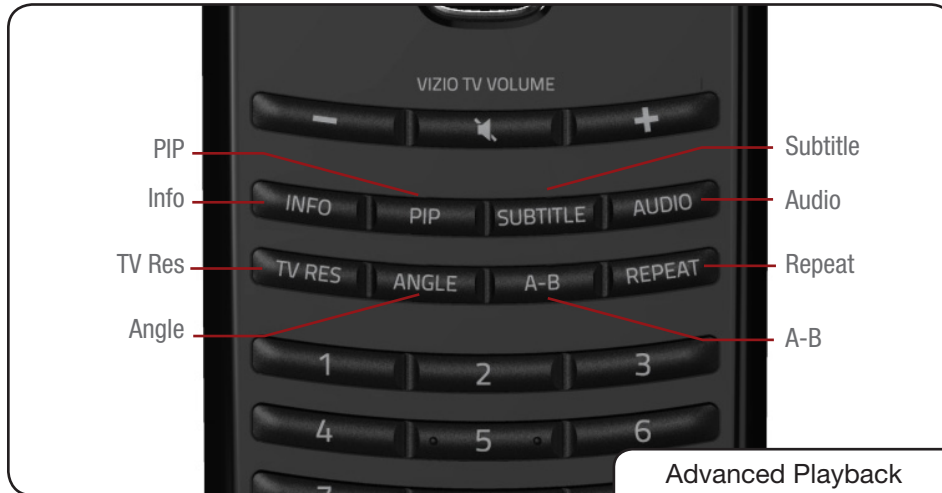
Play/Pause: Pause playback. Press again to resume normal playback.

Fast Forward: Increase speed of playback. Press repeatedly to increase the speed. Speeds are x2, x4, x8, x16, x32, x64, and x128. Press **Play/Pause** to resume normal playback.

Stop: Halt playback.

Advanced Playback Functions

Your player also features advanced playback functions.



PIP: Enable picture-in-picture (Supported discs only.)

Info: Display the Info Bar. Press again to close the Info Bar.

TV Res: Change the output resolution. Press repeatedly to cycle through available resolutions.

Angle: Some video discs are recorded using multiple camera angles. Press to change viewing angle. (Supported discs only.)

Subtitle: Open subtitle menu. Press again to close. See *Changing the Subtitle Language* on page 19. (Supported discs only.)

Audio: Open audio menu. Press again to close. See *Adjusting the Audio Settings* on page 16. (Supported discs only.)

A-B: Loop a segment of audio or video. Press at the beginning of the desired segment, and again at the end. Segment will loop until the **REPEAT** button is pressed. (Supported discs only.)

Repeat: Change repeat mode (Supported discs only):

- **All** - Repeat all tracks in order.
- **Random** - Repeat all tracks randomly.
- **Track** - Repeat the currently playing track.
- **Off** - Resume normal playback.

Viewing BD-Live Content

Your player can access special content from discs that support BD-Live. This special content varies, but sometimes includes games, movie trailers, and director commentaries.

To use BD-Live, you need:

- A working internet connection. See *Setting Up Your Network Connection* on page 7.
- A Blu-ray disc that contains BD-Live content.
- A USB thumb drive with 1GB of available memory connected to the player's USB port.

For more details on viewing BD-Live content, see *Changing the BD-Live Settings* on page 20.

Viewing USB Media - Video and Audio

Your player features a USB port where you can connect and share a USB thumb drive containing your photos and music.

The player supports the following file types:

Media Type	File Types
Audio	.mp3 .aac
Images	.jpeg .png

Playing USB Photos and Audio

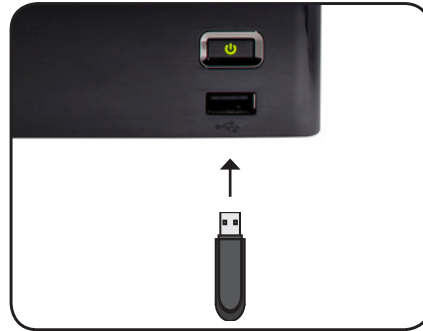
To play USB media, you must first save your music or images onto a USB thumb drive.

Remember:

- The USB thumb drive must be formatted as FAT32.
- Files on the USB thumb drive must end in a supported file extension (.mp3, .jpg, etc).
- The player will not play media from external hard drives or mp3 players.

To play your USB media:

1. Turn the player off. Connect your USB thumb drive to the USB port on the front of the player.



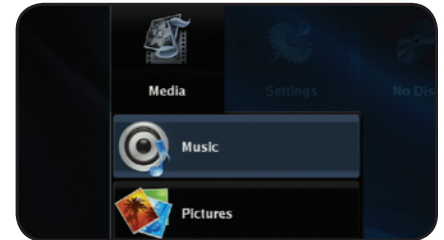
2. Press the **Power** button on the remote or press the **Power** button on the front of the player to turn it on.



3. Use the **Arrow** buttons on the remote to highlight **Media**, then press **SELECT**.



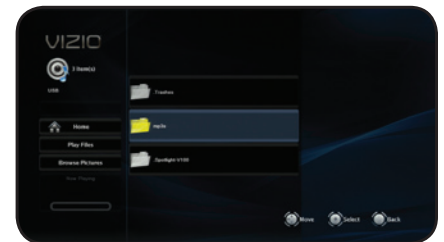
4. Use the **Up/Down Arrow** buttons to highlight the media type you want to play, then press **SELECT**.



5. Use the **Arrow** and **SELECT** buttons on the remote to locate your media file in the file browser.

Highlight the file and press **SELECT**.

The media file begins to play.



Do not remove the USB thumb drive while the player is on. Doing so may damage the drive.

USB Media Playback Controls

When listening to USB audio, you can control the playback using buttons on the remote.



USB Playback Buttons

- Previous:** Play the file listed before the currently-playing file. (Audio only.)
- Next:** Play the file listed after the currently-playing file. (Audio only.)
- Rewind:** Reverse playback. Press repeatedly to increase the speed. Speeds are x2, x4, x8, x16, x32, x64, and x128. Press **Play/Pause** to resume normal playback.
- Play/Pause:** Pause playback. Press again to resume normal playback.
- Fast Forward:** Increase speed of playback. Press repeatedly to increase the speed. Speeds are x2, x4, x8, x16, x32, x64, and x128. Press **Play/Pause** to resume normal playback.
- Stop:** Halt playback.



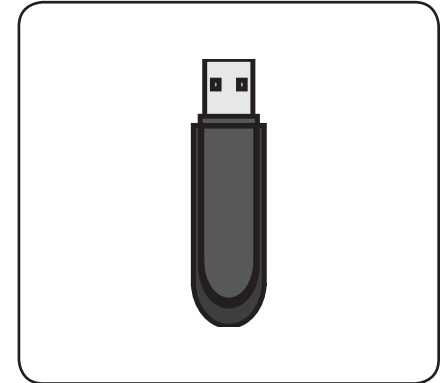
The **REPEAT** button can be used with USB audio files as it is with disc media.

Viewing a Photo Slide Show

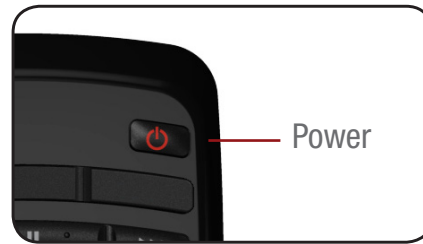
Photos can be viewed sequentially using the slide show feature.

To start a slide show:

1. Load all of your .jpeg or .png photos into a single folder on the USB thumb drive.
2. Turn the player off. Connect your USB thumb drive to the USB port on the back of the player.



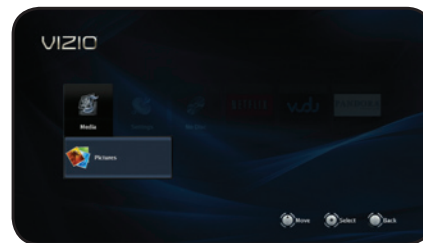
3. Press the **Power** button on the remote or press the **Power** button on the front of the player to turn it on.



4. Use the **Arrow** buttons on the remote to highlight **Media**, then press **SELECT**.

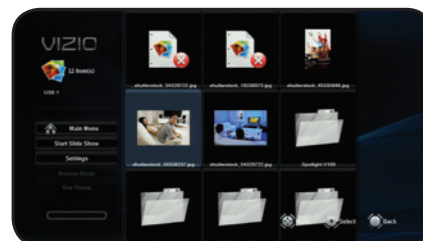


5. Use the **Up/Down Arrow** buttons to highlight **Pictures**, then press **SELECT**.



6. Use the **Arrow** and **SELECT** buttons on the remote to locate your photo folder in the file browser.

Highlight **Start Slide Show** and press **SELECT**. The slide show begins to play.



Adjusting the Slide Show Settings

The slide show settings can be adjusted to make your presentations more exciting.

To adjust the settings:

1. Highlight **Settings** in the Pictures file browser screen and press **SELECT**.
2. Adjust the settings:
 - **Slide Show Effects** - Change the transition between slides. Choose from **Horizontal Scroll**, **Fade**, **Shutter**, and **None**.
 - **Slide Show Delay** - This setting adjusts the amount of time each slide is displayed. Choose from **1**, **2**, **5**, **10**, **15**, and **30** seconds. If you want no delay between slides, choose **No Delay**.
3. When you have adjusted the settings, highlight **OK** and press **SELECT**. The Settings menu closes.
4. Start your slide show by highlighting **Start Slide Show** and press **SELECT**.

Your player is preset to work with most setups out of the box, but if you would like to adjust any of the player's settings, you can use the on-screen menu to do so. The Settings menu is divided into these parts:

- Display
- Audio
- Language
- BD-Live
- Quick Setup
- Parental
- System
- Network
- Info

Adjusting the Display Settings

From the Display menu, you can adjust the way the player displays your video.

To access the Display menu:

1. Turn on the player and your TV. Use the **Arrow** buttons on the remote to highlight **Settings** and press **OK**.

The Settings menu is displayed.



2. Use the **Arrow** buttons on the remote to highlight **Display** and press **OK**.

The Display drop-down menu is displayed. Your current settings are displayed to the right of each menu option.



Changing the Display Resolution

For the best viewing experience, you should adjust the player's settings so that it outputs video in a resolution supported by your TV.

To change the display resolution:

1. From the Display menu, use the **Up/Down Arrow** buttons on the remote to highlight **Resolution** and press **OK**.

The Resolution menu is displayed.



2. Using the **Arrow** buttons, highlight the highest resolution your TV can display, then press **OK**.

If your TV is connected to the player using HDMI, select **HDMI Auto**. The player will detect the best display resolution automatically.



If you choose a resolution unsupported by your TV, you will see an error message. The resolution will revert to its previous setting.



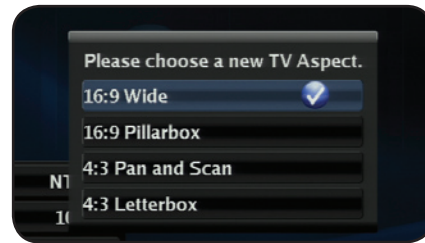
Only HDMI connections can display 1080p video.

Adjusting the Aspect Ratio

If video displayed from the player appears distorted or otherwise incorrect, you may need to adjust the aspect ratio of the player to match that of your TV. (Devices differ; see your TV's user manual to determine its aspect ratio.)

To adjust the aspect ratio:

1. From the Display menu, use the **Up/Down Arrow** buttons on the remote to highlight **TV Aspect** and press **OK**.



The TV Aspect menu is displayed.

2. Highlight the aspect ratio that most closely matches that of your TV and press **OK**:
 - **16:9 Wide** - Use this setting if you have a "widescreen" television. When using this setting, video formatted in 4:3 will be stretched horizontally to fit the screen.
 - **16:9 Pillarbox** - Use this setting if you have a "widescreen" television. When using this setting, video formatted in 4:3 will be displayed in the center of the screen. Vertical bars will be displayed on the left and right edges of the picture.
 - **4:3 Pan and Scan** - Use this setting if you have a "traditional" screen (nearly square). When using this setting, movies in widescreen format will be centered and the left and right edges of the picture may be cut off.
 - **4:3 Letterbox** - Use this setting if you have a "traditional" screen (nearly square). When using this setting, movies in widescreen format will be fully displayed, with black bars on the top and bottom of the picture.

Activating Film Mode

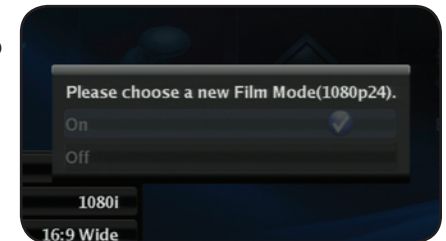
Movies are recorded on film at a rate of 24 pictures, or frames, per second. Many of the movies on Blu-ray discs are formatted at this frame rate (24 frames/second). However, not all TVs can display this format.

If the player is connected to your TV via HDMI and is capable of displaying 24 frames/second, you can activate Film Mode for a better viewing experience.

To activate/deactivate Film Mode:

1. From the Display menu, use the **Up/Down Arrow** buttons on the remote to highlight **Film Mode** and press **OK**.

The Film Mode menu is displayed.



2. Highlight **On** or **Off** and press **OK**.

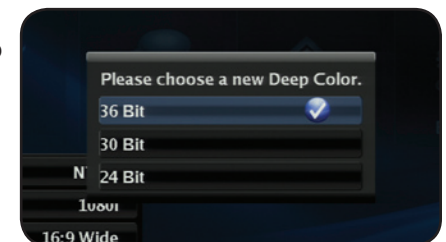
Adjusting the Deep Color Setting

The player is capable of outputting 36-bit color over HDMI. For the best viewing experience, the deep color setting should be adjusted to match your TV's display capabilities.

To adjust the Deep Color setting:

1. From the Display menu, use the **Up/Down Arrow** buttons on the remote to highlight **Deep Color** and press **OK**.

The Deep Color menu is displayed.



2. Highlight the highest color setting that your TV can display. (Devices differ; see your TV's user manual for details.)

Adjusting the Audio Settings

The settings in the Audio Menu configure the player's digital audio outputs (HDMI, Coaxial, or Optical/SPDIF).

To access the Audio Menu:

1. Turn on the player and your TV. Use the **Arrow** buttons on the remote to highlight **Settings** and press **OK**.

The Settings menu is displayed.



2. Use the **Arrow** buttons on the remote to highlight **Audio** and press **OK**.

The Audio drop-down menu is displayed. Your current settings are displayed to the right of each menu option.



Changing the PCM Downsampling Rate

This setting should be adjusted if your home audio receiver can process high-bitrate PCM signals over the Optical/SPDIF or Coaxial port.



If you are unsure about how to adjust this setting, leave the PCM Downsampling rate at 48 kHz.



Changing this setting has no effect if your audio is connected via HDMI cable.

If you have the player connected to a home audio receiver and your receiver can process high-bitrate PCM signals:

1. From the Audio menu, use the **Up/Down Arrow** buttons on the remote to highlight **PCM Downsampling** and press **OK**.

The PCM Downsampling menu is displayed.



2. Highlight the highest downsampling rate your receiver can process and press **OK**. (Devices differ; see your receiver's user manual for details.)

Adjusting the Digital Audio Output

This setting changes the type of digital audio data the player outputs over HDMI, Optical/SPDIF, or Coaxial ports. Depending on your setup, you may need to try several settings.

1. From the Audio menu, use the **Up/Down Arrow** buttons on the remote to highlight **Digital Output** and press **OK**.

The Digital Output menu is displayed.



2. Highlight the digital audio format best suited to your home audio receiver and press **OK**:

- **PCM Stereo** - Use this setting if you do not have a receiver connected to the player, or if you have an “old-fashioned” stereo receiver.
- **Bitstream HD** - Use this setting if you have an HDMI-connected receiver capable of decoding DTS-HD Master Audio and Dolby TrueHD digital audio. When using this setting, you can only listen to the primary audio track on a disc (this is usually the movie’s soundtrack).
- **Bitstream Legacy** - **If you are unsure about which setting to use, select this setting.** Use this setting if you have an Optical/SPDIF-connected receiver capable of decoding DTS, Dolby Digital, or Dolby Digital Plus audio.
- **Bitstream Mixed** - Use this setting if you have an Optical/SPDIF- or HDMI-connected receiver capable of decoding DTS, Dolby Digital, or Dolby Digital Plus audio and you would like to be able to hear secondary audio tracks on your discs (directors’ commentaries, etc).

Activating or Deactivating Dynamic Range Control

When activated, this setting normalizes the volume of a disc’s audio track. The loudest parts of the soundtrack will be quieter, and the quietest parts will be louder. This effect can be useful when viewing movies late at night, when others might be sleeping.



To use this setting, your player’s audio must be connected with HDMI or Optical/SPDIF, and digital output must be set to **Bitstream Mixed** or **PCM**.

To activate or deactivate Dynamic Range Control:

1. From the Audio menu, use the **Up/Down Arrow** buttons on the remote to highlight **Dynamic Range Control** and press **OK**.

The Dynamic Range Control menu is displayed.



2. Use the **Arrow** buttons on the remote to highlight **On**, **Off**, or **Auto** and press **OK**.



Selecting **Auto** for this setting turns on Dynamic Range Control for all Blu-ray soundtracks except Dolby TruHD.

Changing the Stereo Downmix Setting

This setting is only used when your Blu-ray Player is connected to an audio receiver with the L and R analog stereo outputs. When connected with these outputs, all audio is reduced to 2 channels.

To change the Stereo Downmix Setting:

1. From the Audio menu, use the **Up/Down Arrow** buttons on the remote to highlight **Stereo Downmix** and press **OK**.

The Stereo Downmix menu is displayed.

2. Use the **Arrow** buttons on the remote to highlight one of the following options and press **OK**:

- **Auto** - Select this option if you are unsure about which setting to choose. The player will select Stereo or Surround Encoded automatically based on the audio source.
- **Stereo** - When selected, the player reduces the audio output to a left and right channel. Select this option if your receiver does not feature Dolby Digital or DTS decoding.
- **Surround Encoded** - When selected, the player reduces the audio output to a left and right channel, but also sends additional simulated surround information for your receiver to decode. Select this option if your receiver can process Dolby Digital or DTS encoding.

Changing the On-Screen Menu Language

Your player can display on-screen menus and play audio in English, French, or Spanish.

To access the Language menu:

1. Turn on the player and your TV. Use the **Arrow** buttons on the remote to highlight **Settings** and press **OK**.

The Settings menu is displayed.



2. Use the **Arrow** buttons on the remote to highlight **Language** and press **OK**.

The Language drop-down menu is displayed. Your current settings are displayed to the right of each menu option.



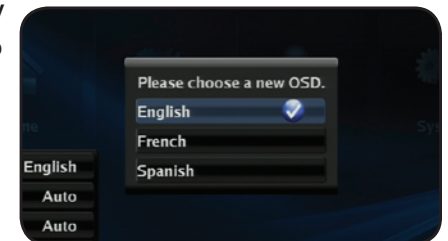
Changing the Player's On-Screen Menu Language

Using this setting, you can change the player's menu language to the one you are most comfortable with.

To change the player's menu language:

1. From the Language menu, use the **Up/Down Arrow** buttons on the remote to highlight **OSD** and press **OK**.

The OSD menu is displayed.



2. Use the **Arrow** buttons on the remote to highlight **English**, **French**, or **Spanish** and press **OK**.

Changing the Disc's Menu Language

Using this setting, you can change the language that is displayed when a disc's main menu is displayed.



Not all languages are available on all discs. Most discs have only one menu language available.

To change the disc's menu language:

1. From the Language menu, use the **Up/Down Arrow** buttons on the remote to highlight **Menu** and press **OK**.



2. Use the **Arrow** buttons on the remote to highlight **Auto**, **English**, **French**, or **Spanish** and press **OK**.



Selecting **Auto** for this setting will result in the default menu language being displayed. This is determined by the setting on the disc.

Changing the Audio Language

This setting changes the spoken language on a played disc.



Not all languages are available on all discs. Most discs have only one or two audio languages available.

To change the disc's audio language:

1. From the Language menu, use the **Up/Down Arrow** buttons on the remote to highlight **Audio** and press **OK**.



2. Use the **Arrow** buttons on the remote to highlight **Auto**, **English**, **French**, or **Spanish** and press **OK**.



Selecting **Auto** for this setting will result in the default audio language being played. This is determined by the setting on the disc.

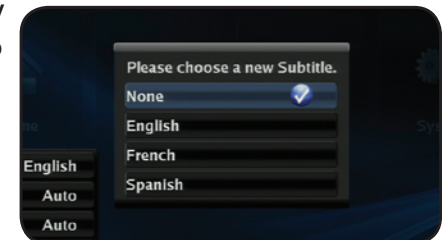
Changing the Subtitle Language

This setting changes the default subtitle language when playing a disc.

To change the subtitle language:

1. From the Language menu, use the **Up/Down Arrow** buttons on the remote to highlight **Subtitle** and press **OK**.

The Subtitle menu is displayed.



2. Use the **Arrow** buttons on the remote to highlight **None**, **English**, **French**, or **Spanish** and press **OK**.

Changing the BD-Live Settings

The BD-Live menu can be used to change BD-Live network access, or to allocate memory for the service.



To enjoy BD Live, a USB thumb drive with at least 1GB of free memory must be connected to the player's USB port.

To access the BD-Live menu:

1. Turn on the player and your TV. Use the **Arrow** buttons on the remote to highlight **Settings** and press **OK**.

The Settings menu is displayed.



2. Use the **Arrow** buttons on the remote to highlight **Language** and press **OK**.

The Language drop-down menu is displayed. Your current settings are displayed to the right of each menu option.

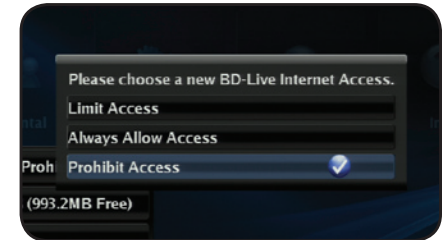


Changing BD-Live Access

This setting allows you to set limitations on the player's ability to access BD-Live content on the internet.

To change BD-Live access:

1. From the BD-Live menu, use the **Up/Down Arrow** buttons on the remote to highlight **BD-Live Internet Access** and press **OK**.



2. Highlight one of the following options and press **OK**:

- **Limit Access** - This setting only allows the player to download content from validated BD-Live websites. This reduces the chances of malicious content being downloaded to the player.
- **Always Allow Access** - This setting allows the player to download content from any BD-Live internet sites. There is little danger of downloading malicious content from commercial Blu-ray discs, but playing illegally-authored or pirated discs may carry an increased risk.
- **Prohibit Access** - This setting blocks the player from accessing any BD-Live content over the internet.

Viewing BD-Live Storage Settings

When a USB thumb drive is connected to the USB port, the player can use its memory for BD-Live storage.

To view the available BD-Live storage:

1. From the BD-Live menu, use the **Up/Down Arrow** buttons on the remote to highlight **BD-Live Storage** and press **OK**.



Erasing Blu-ray Memory Storage

Selecting this menu option clears the portion of the player's internal memory used to store BD-Live content and disc bookmarks. Disc bookmarks are used by the player to resume playback at the point the disc was halted.

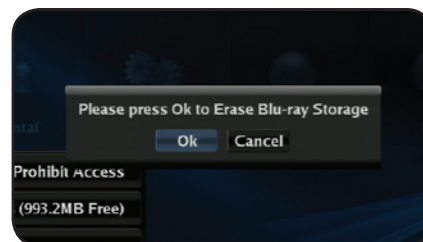


You cannot "undo" a memory erase, but it will not damage the player in any way.

To erase the player's memory storage:

1. From the BD-Live menu, use the **Up/Down Arrow** buttons on the remote to highlight **Erase Blu-ray Storage** and press **OK**.

A confirmation message is displayed.



2. To proceed and clear the player's memory, highlight **OK** and press **OK**.

Setting the Parental Controls

The player's parental controls allow you to prevent the player from displaying certain rated content without a password.

To access the Parental Controls menu:

1. Turn on the player and your TV. Use the **Arrow** buttons on the remote to highlight **Settings** and press **OK**.

The Parental Controls menu is displayed.



2. Use the **Arrow** buttons on the remote to highlight **Parental** and press **OK**.

The Parental drop-down menu is displayed. Your current settings are displayed to the right of each menu option.



Setting the Parental Country

Because countries have their own rating systems, if you are going to use the Parental Controls, you should set the parental country to match the country in which you live.



Some discs do not support multiple country-based rating systems.



You may be prompted to enter your Parental Code. If you have not yet set the code, enter **0000**.

To set the parental country:

1. From the Parental Controls menu, use the **Up/Down Arrow** buttons on the remote to highlight **Parental Country** and press **OK**.



2. Use the **Up/Down Arrow** and **OK** buttons to highlight the country in which you live:
 - **USA**
 - **Canada**
 - **China**
 - **Japan**

Activating or Deactivating the Parental Controls

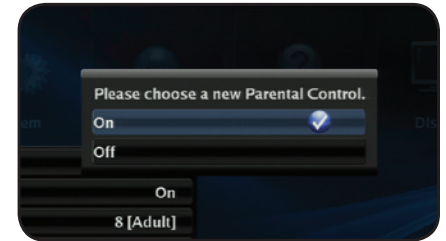
Use this setting to turn the parental controls on or off.



You may be prompted to enter your Parental Code. If you have not yet set the code, enter **0000**.

To activate/deactivate the parental controls:

1. From the Parental Controls menu, use the **Up/Down Arrow** buttons on the remote to highlight **Parental Controls** and press **OK**.
2. Use the **Up/Down Arrow** buttons to highlight **On** or **Off** and press **OK**.



Setting the Parental Restriction Level

Use this setting to restrict the playback of discs encoded with a rating level equal to or higher than the level you choose.



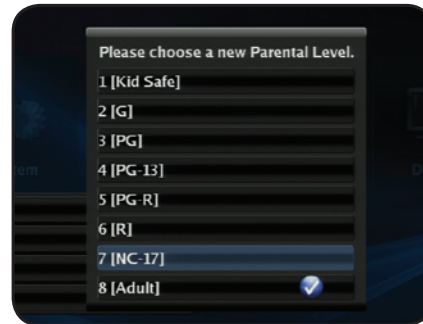
The Parental Controls must be set to **On** for this setting to work.



You may be prompted to enter your Parental Code. If you have not yet set the code, enter **0000**.

To set the parental level:

1. From the Parental Controls menu, use the **Up/Down Arrow** buttons on the remote to highlight **Parental Level** and press **OK**.



2. Using the **Arrow** buttons on the remote, highlight the highest rating level you wish to allow, then press **OK**.

For example, if you only want the player to display content rated PG or below, select **PG**.

Content ratings will vary according to your country.

Changing the Parental Code

If you use the parental controls, you should change the passcode from the default to prevent children from accessing inappropriate material.



You may be prompted to enter your Parental Code. If you have not yet set the code, enter **0000**.

To change the parental code:

1. From the Parental Controls menu, use the **Up/Down Arrow** buttons on the remote to highlight **Parental Password** and press **OK**.



2. Using the **Keypad** on the remote, enter a new 4-digit parental passcode, then highlight **OK** and press **OK**.
3. Write down your passcode and store it in a secure location.

Changing the System Settings

The System menu allows you to customize autoplay, power, screen saver, and network settings. From this menu, you can also reset the player to its factory defaults.

To access the System menu:

1. Turn on the player and your TV. Use the **Arrow** buttons on the remote to highlight **Settings** and press **OK**.

The Settings menu is displayed.



2. Use the **Arrow** buttons on the remote to highlight **System** and press **OK**.

The System drop-down menu is displayed. Your current settings are displayed to the right of each menu option.



Activating or Deactivating Disc Autoplay

When this option is activated, the player will automatically play an inserted disc.

When this option is deactivated, you will need to select **Play Disc** to play a disc.



Autoplay does not mean that the player will start a movie. The disc will load and usually the disc's main menu will be displayed.

To Activate/Deactivate Disc Autoplay:

1. From the System menu, use the **Up/Down Arrow** buttons on the remote to highlight **Optical Disc Autoplay** and press **OK**.



2. Using the **Up/Down Arrow** buttons on the remote, highlight **On** or **Off** and press **OK**.

Setting Auto Power Down

The player has a power-saving feature that turns it off after a set period of inactivity.

To customize the period before auto power down:

1. From the settings menu, use the **Up/Down Arrow** buttons on the remote to highlight **Auto Power Down** and press **OK**.



2. Use the **Arrow** buttons to highlight the duration after which you want the player to shut down, then press **OK**:

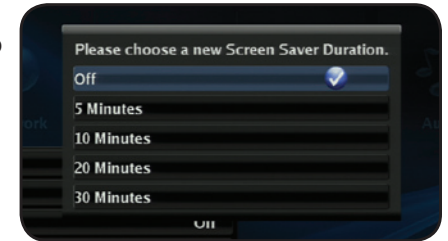
- **5 Minutes**
- **10 Minutes**
- **20 Minutes**
- **30 Minutes**

Setting the Screen Saver Duration

The player features a screen saver that will blank the screen after a set period of inactivity. This can prevent image “burn in” on your TV.

To set the screen saver:

1. From the settings menu, use the **Up/Down Arrow** buttons on the remote to highlight **Screen Saver Duration** and press **OK**.



2. Use the **Arrow** buttons to highlight the duration after which you want the player to shut down, then press **OK**:
 - **Off** (The screen saver will not activate)
 - **5 Minutes**
 - **10 Minutes**
 - **20 Minutes**
 - **30 Minutes**

Enabling or Disabling CEC Support

When enabled, CEC (Consumer Electronic Control), allows you to control your Blu-ray player using your TV remote. For CEC to work, your player must be connected to your TV with an HDMI cable, and your TV must support CEC. (Not all manufacturers enable CEC for all products.)

To enable to disable CEC support:

1. From the settings menu, use the **Up/Down Arrow** buttons on the remote to highlight **CEC Support** and press **OK**.
2. Use the **Arrow** buttons to highlight **On** or **Off**, then press **OK**.

Updating the Player's Firmware Via Your Home Network

To ensure your player has the most current firmware, you should occasionally update via your network.



To use this function, your player must be connected to your home network and to the internet.

To update your player's firmware:

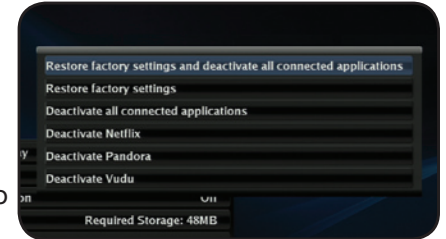
1. From the settings menu, use the **Up/Down Arrow** buttons on the remote to highlight Update Via Network and press **OK**.
2. Confirm that you want to update the player. Highlight **OK** and press **OK**.

Restoring the Player's Factory Defaults

This setting allows you to restore menu and Internet App options to their factory defaults.

To restore a setting to the factory default:

1. From the settings menu, use the **Up/Down Arrow** buttons on the remote to highlight **Restore Factory Defaults** and press **OK**.
2. Use the **Arrow** and **OK** buttons to select the setting you wish to restore to the factory default:



- **Restore factory settings and deactivate all connected applications** - Restore the player and all of its Internet Apps to their factory settings.
- **Restore factory settings** - Restore the player to its factory settings, but retain Internet App settings.
- **Deactivate all connected applications** - Restore all Internet Apps to their factory settings and remove all account information.
- **Deactivate Netflix/Pandora/Vudu** - Remove all account information and restore to factory settings.

Adjusting the Network Settings

In order to access BD-Live or Internet Apps, your player must be connected to your home network and to the internet.

To access the Network menu:

1. Turn on the player and your TV. Use the **Arrow** buttons on the remote to highlight **Settings** and press **OK**.

The Settings menu is displayed.



2. Use the **Arrow** buttons on the remote to highlight **Network** and press **OK**.

The Network drop-down menu is displayed.



Adjusting the Wired Settings

If your player is connected to your home network with an ethernet cable, the player will automatically detect the connection. You can manually adjust the settings, but VIZIO recommends this for advanced users only.

To adjust the wired settings:

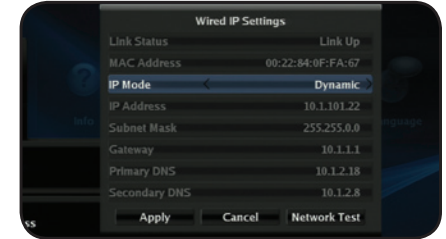
1. From the Network Menu, use the **Arrow** buttons on the remote to highlight **Wired** and press **OK**.

The Wired menu is displayed.



2. Use the **Arrow** buttons on the remote to highlight **IP Mode** and press **OK**.

Use the **Arrow** buttons to select **Off**, **Dynamic**, or **Manual** and press **OK**.



To change the individual IP settings, IP Mode must be set to **Manual**.

3. Use the Arrow and OK buttons on the remote to change each of the IP Mode settings:

- **IP Address**
- **Subnet Mask**
- **Gateway**
- **Primary DNS**
- **Secondary DNS**



If you are unsure what values to enter, contact your Internet Service Provider (ISP) for assistance.

4. When you are finished, highlight **Apply** and press **OK**.

Viewing the Info Screen

The info screen displays the following information:

- Software Version
- Software Date
- Interface
- Link Status
- MAC Address
- IP Address

To access the info screen:

1. Turn on the player and your TV. Use the **Arrow** buttons on the remote to highlight **Settings** and press **OK**.

The Settings menu is displayed.



2. Use the **Arrow** buttons on the remote to highlight **Info** and press **OK**.

The info screen is displayed.



Using the Netflix App

Your player has the Netflix App built-in. With it, you can stream movies, television shows, and other content from the internet to your TV.

To use Netflix, you must first:

- Have a high-speed internet connection and a home computer.
- Connect your player to your home network.
- Have a valid Netflix account.

Opening a Netflix Account

To use Netflix, you must first open an account. This can be completed using the on-screen menu and your home computer.

To open a Netflix account:

1. Turn on your player and the TV.

Using the **Arrow** buttons on the remote, highlight **Netflix** and press the **SELECT** button on the remote.

2. Follow the on-screen instructions until your code is displayed.

3. Go to your computer and navigate to **www.netflix.com/VIZIO**

Sign up using the code displayed on the TV screen.

For Netflix support, go to **www.netflix.com/help** or call **1-866-579-7113**.



Using the VUDU App

Your player has the VUDU App built-in. With it, you can stream high-definition movies and TV programs from the internet to your TV. VUDU also features popular applications like Facebook and Twitter.

To use VUDU, you must first:

- Have a high-speed internet connection and a home computer.
- Connect your player to your home network. See XX.
- Have a valid VUDU account.

Opening a VUDU Account

To use VUDU, you must first open an account. This can be completed using the on-screen menu and your home computer.

1. Turn on your player and the TV.

Using the **Arrow** buttons on the remote, highlight **VUDU** and press the **SELECT** button on the remote.

The VUDU Apps screen is displayed.



2. Using the **Arrow** buttons on the remote, highlight **VUDU Movies** and press **SELECT**.

The VUDU home screen is displayed.



3. Highlight **Free HD Rental** and press **SELECT**.



4. Using the **Arrow** and **SELECT** buttons, enter your e-mail address, then highlight **OK**.

An e-mail is sent to your e-mail address.



5. Use your home computer to read the VUDU e-mail. Click the **Complete Account Setup** button in the body of the e-mail.

Complete the account setup by following the instructions on the VUDU website.

For VUDU support, go to www.VUDU.com/support or call 1-888-554-8838.



Using VUDU to Watch a Movie

VUDU offers thousands of HD-quality movies and TV programs. Before you begin:

- Ensure your player is connected to your home network and to the internet.
- Ensure you have a valid VUDU account.

To watch a movie or program on VUDU:

1. Turn on your player and the TV.

Using the **Arrow** buttons on the remote, highlight **VUDU** and press the **SELECT** button on the remote.



The VUDU Apps screen is displayed.

2. Using the **Arrow** buttons on the remote, highlight **VUDU Movies** and press **SELECT**.

The VUDU home screen is displayed.



Remember, you can access Facebook, Twitter, and other Apps from the VUDU home screen.

3. Use the **Arrow** and **SELECT** buttons on the remote to choose from the main menu options:
 - **Most Watched** - Displays a list of movies most watched by VUDU users.
 - **New on VUDU** - Displays a list of newly available movies.
 - **Explore Catalog** - Allows you to search for movies by genre, actor, director, or title.
 - **My VUDU** - Displays a list of your purchased rentals, movies, TV shows, your Wish List, and also displays your VUDU settings.

- Use the **Arrow** buttons to highlight the movie you want to watch, then press **SELECT**.

The Movie Details screen is displayed.

Highlight **Rent/Own** and press **SELECT**.

- Use the **Arrow** buttons to highlight the purchase option you would like, then press **SELECT**:
 - HDX** - Highest quality 1080p HD video.
 - HD** - 720p HD video.
 - SD** - 480p (DVD-quality) video.
- Confirm your selection and press **SELECT**.

Your movie plays.

Using the Pandora App

Pandora is a personalized internet-based radio service that is designed to help you discover new music while you listen to music you already know and enjoy.

To use Pandora, you must first:

- Have a high-speed internet connection and a home computer.
- Connect your player to your home network. See XX.
- Have a valid Pandora account.

Opening a Pandora Account

To use Pandora, you must first open an account. This can be completed using the on-screen menu and your home computer.

To open a Pandora account:

- Turn on your player and the TV.

Using the **Arrow** buttons on the remote, highlight **Pandora** and press the **SELECT** button on the remote.

The Pandora App Welcome screen is displayed.

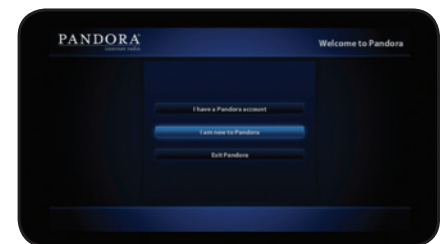


- Using the **Arrow** buttons on the remote, highlight **I am new to Pandora** and press **SELECT**.

Follow the on-screen instructions.

You will need to go to the Pandora web site using your home computer.

For Pandora support, go to www.pandora.com/support



Logging Into Your Pandora Account

If you already have a Pandora account, you can sign in and listen to your personalized stations.

To log into your Pandora account:

1. Turn on your player and the TV.

Using the **Arrow** buttons on the remote, highlight **Pandora** and press the **SELECT** button on the remote.

The Pandora App Welcome screen is displayed.



2. Using the **Arrow** buttons on the remote, highlight **I have a Pandora account** and press **SELECT**.

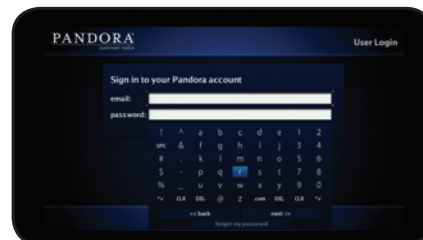
The User Login screen is displayed.



3. Use the **Arrow** and **SELECT** buttons on the remote to enter your e-mail address and Pandora password.

When you are finished with each entry, highlight **next >>** and press **SELECT**.

After a successful login, the Station List screen is displayed.



Listening to Music Using Pandora

Log into Pandora. At the Station List screen, you are presented with several options for listening to music:

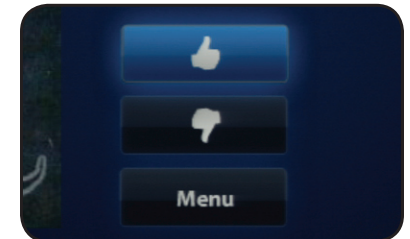
- **QuickMix** - This option will shuffle a selection of music from your personalized stations.
- **Create Station** - Select this option then enter the name of an artist, song, or composer, and Pandora will create and play a station based upon your entry.
- **Your Station List** - Select an already-created station from the list on the right side of the Station List screen to play it.

Thumbs Up and Thumbs Down

While your station plays, you can give feedback on which songs you like or don't like.

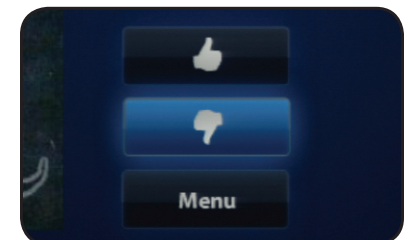
- To tell Pandora you **do** like a song, highlight the **Thumbs Up** icon and press **SELECT**.

That song will play more often, and Pandora will play similar songs.



- To tell Pandora you **don't** like a song, highlight the **Thumbs Down** icon and press **SELECT**.

That song will never play again on that station, and if you have previously thumbed down a song by the same artist, songs by that artist will no longer play on that station.



Additional Pandora Menu Options



Additional Menu Options

If you highlight the **MENU** button and press **SELECT**, you are presented with additional menu options:

- **Bookmark This Artist** - Select this option to save the currently-playing artist to a list of bookmarks. You can view your bookmarks at www.pandora.com.
- **Bookmark This Song** - Select this option to save the currently-playing song to a list of bookmarks. You can view your bookmarks at www.Pandora.com.
- **I'm Tired of This Song** - Select this option to prevent the currently-playing song from playing on any of your personalized stations. Pandora will eventually play the song again, but not anytime soon.
- **Delete This Song** - Select this option to remove the currently-playing station from your list of stations. Once you confirm that you want to delete the station, it is permanently removed.
- **Rename This Station** - Select this option to rename the currently-playing station. Use the **Arrow** and **SELECT** buttons to enter the new name. When you are finished, highlight **rename>>** and press **SELECT**.
- **Why Is This Song Playing** - Select this option to see a detailed explanation of why Pandora chose the currently-playing song or artist.
- **Return to Station List** - Select this option to return to your personalized station list.
- **Close Menu** - Close the menu.

Using the HULU App

Hulu is an online video service that offers a selection of hit shows, clips, movies and more.

To use VUDU, you must first:

- Have a high-speed internet connection and a home computer.
- Connect your player to your home network. See XX.
- Have a valid VUDU account.

To open a HULU account:

1. Turn on your player and the TV.

Use the **Arrow** buttons on the remote to highlight **HULU**. Press the **OK** button.

You are asked if you are already a **HULU** subscriber. Highlight **No** and press **OK**.

2. A welcome screen is displayed. Write down the Referral Code.
3. On your home computer, go to www.HULU.com/plus and follow the account setup instructions.

Enter the Referral Code when prompted.

Products are often returned due to a technical problem rather than due to a defect. If you are experiencing a problem when using your TV, try to fix the issue using this troubleshooting guide.

If, after using this troubleshooting guide, you are still experiencing an issue with your TV, contact VIZIO's Support Department. Quality customer support and service are integral parts of VIZIO's commitment to service excellence.

Phone: (877) 698-4946

Web: www.VIZIO.com

Fax: (949) 585-9563

Hours of operation:

Email: techsupport@vizio.com


Monday - Friday: 6 am to 9 pm (PST)

Saturday - Sunday: 8 am to 4pm (PST)

There is no power.

- Ensure the power cord is securely connected to a working electrical outlet.
- Press the Power/Standby button on the remote or touch the Power/Standby control on the player.
- Try plugging the power cord into a different electrical outlet.

Nothing happens when I press buttons on the remote.

- Place new batteries in the remote. Ensure the batteries are inserted correctly.
- Ensure no objects are blocking the front of the Blu-ray Player
- When using the remote, point it directly at the Blu-ray Player.
- If you see , the action you are trying to perform is not allowed by the Player or disc.

My Blu-Ray or DVD disc does not play.

- Ensure the disc is clean and free of scratches.
- If you are using parental controls, the disc may not play.

I cannot connect the Player to my network.

- Unplug the modem/router and the Player. Wait 10 seconds, then turn them back on.
- Ensure the ethernet cable is securely connected to both the Player and your modem/router.
- Refer to your modem/router user guide.

The picture quality seems low.

- Connect the Player to your TV using an HDMI cable for the best picture quality.
- Connect the Player to an HDTV capable of displaying 720p or 1080p for the best picture quality.
- Ensure the cables connecting the Player to your TV are securely connected.
- Watch Blu-ray discs for the best picture quality. DVD discs are limited to 480p resolution.
- To view streaming video (Netflix, VUDU), a high-speed wired/wireless Internet connection is required.

I am having trouble with Internet Apps.

- If you experience issues with Apps, please contact:

Netflix: www.netflix.com/help or 1-866-579-7113

Pandora: www.pandora.com/support

VUDU: www.VUDU.com/support or 1-888-554-8838

HULU Plus: www.hulu.com/help

Specifications

Dimensions: 12.60" x 1.77" x 8.23"
320 x 45 x 209mm

Weight: 4.96 lbs
2.25 kg

Resolutions Supported: Blu-ray Disc Resolutions of 1080p (HDMI Out) / 1080i / 720p / 480i / 480p (HDMI / Component Out) / DVD, DVD-R, DVD-RW Selectable Resolutions of 1080p (HDMI) / 1080i / 720p / 480i / 480p (HDMI / Component Out)

Audio: CD, CD-R, CD-RW, MP3, WMA Support / 5.1, 7.1 PCM Digital Audio via HDMI / 24-bit / 192KHz Audio DAC

Dolby: Dolby Digital / Dolby Digital Plus / Dolby Digital TrueHD

DTS: DTS Digital Surround / DTS HD Advanced Digital Out

Ethernet Ports: 1

USB 2.0 Inputs: 1

HDMI Ports: 1

Digital Audio Ports: 2 (Optical/SPDIF, Coaxial)

OSD Languages: 3 (English, Spanish, French)

Energy Star Qualified: Yes

Warranty: 1 Year

ON PARTS AND LABOR

Covers units purchased as new in United States and Puerto Rico Only.

VIZIO provides a warranty to the original purchaser of a new Product against defects in materials and workmanship for a period of one (1) year of non-commercial usage and ninety (90) days of commercial use. If a Product covered by this warranty is determined to be defective within the warranty period, VIZIO will either repair or replace the Product at its sole option and discretion.

To obtain warranty service, contact VIZIO Technical Support via e-mail: TechSupport@VIZIO.com or via phone at 877 MY VIZIO (877.698.4946) from 6:00AM to 9:00PM Monday through Friday and 8:00AM to 4:00PM Saturday and Sunday, Pacific Time, or visit www.VIZIO.com. PRE-AUTHORIZATION MUST BE OBTAINED BEFORE SENDING ANY PRODUCT TO A VIZIO SERVICE CENTER. Proof of purchase in the form of a purchase receipt or copy thereof is required to show that a Product is within the warranty period.

Parts and Labor

There will be no charge for parts or labor during the warranty period. Replacement parts and Products may be new or recertified at VIZIO's option and sole discretion. Replacement parts and Products are warranted for the remaining portion of the original warranty or for ninety (90) days from warranty service or replacement, whichever is greater.

Type of Service

Defective Products must be sent to a VIZIO service center to obtain warranty service. VIZIO is not responsible for transportation costs to the service center, but VIZIO will cover return shipping to the customer. PRE-AUTHORIZATION IS REQUIRED BEFORE SENDING ANY PRODUCT TO A VIZIO SERVICE CENTER FOR WARRANTY SERVICE.

Product returns to VIZIO's service centers must utilize either the original carton box and shipping material or packaging that affords an equal degree of protection. VIZIO Technical Support will provide instructions for packing and shipping the covered Product to the VIZIO service center.

Limitations and Exclusions

VIZIO's one-year limited warranty only covers defects in materials and workmanship. This warranty does not cover, for example: cosmetic damage, normal wear and tear, improper operation, improper voltage supply or power surges, signal issues, damages from shipping, acts of God, any type of customer misuse, modifications or adjustments, as well as installation and set-up issues or any repairs attempted by anyone other than by a VIZIO authorized service center. Products with unreadable or removed serial numbers, or requiring routine

maintenance are not covered. This one year limited warranty does not cover Products sold "AS IS", "FACTORY RECERTIFIED", or by a non-authorized reseller.

THERE ARE NO EXPRESS WARRANTIES OTHER THAN THOSE LISTED OR DESCRIBED ABOVE. ANY IMPLIED WARRANTIES, INCLUDING ANY IMPLIED WARRANTY OF MERCHANTABILITY AND FITNESS FOR A PARTICULAR PURPOSE, SHALL BE LIMITED IN DURATION TO THE PERIOD OF TIME SET FORTH ABOVE. VIZIO'S TOTAL LIABILITY FOR ANY AND ALL LOSSES AND DAMAGES RESULTING FROM ANY CAUSE WHATSOEVER INCLUDING VIZIO'S NEGLIGENCE, ALLEGED DAMAGE, OR DEFECTIVE GOODS, WHETHER SUCH DEFECTS ARE DISCOVERABLE OR LATENT, SHALL IN NO EVENT EXCEED THE PURCHASE PRICE OF THE PRODUCT. VIZIO SHALL NOT BE RESPONSIBLE FOR LOSS OF USE, LOSS OF INFORMATION OR DATA, COMMERCIAL LOSS, LOST REVENUE OR LOST PROFITS, OR OTHER INCIDENTAL OR CONSEQUENTIAL DAMAGES. SOME STATES DO NOT ALLOW LIMITATIONS ON HOW LONG AN IMPLIED WARRANTY LASTS OR THE EXCLUSION OF INCIDENTAL OR CONSEQUENTIAL DAMAGES, SO THE ABOVE LIMITATIONS OR EXCLUSIONS MAY NOT APPLY TO YOU. THIS WARRANTY GIVES YOU SPECIFIC LEGAL RIGHTS, AND YOU MAY ALSO HAVE OTHER RIGHTS, WHICH VARY FROM STATE TO STATE. THIS WARRANTY IS SUBJECT TO CHANGE WITHOUT NOTICE.

CHECK WWW.VIZIO.COM FOR THE MOST CURRENT VERSION.

Personal Data

If your VIZIO product is capable of storing personal data and other information, ALL CONTENTS AND INFORMATION WILL BE DELETED IN THE COURSE OF SOME IN-HOME AND ALL SHIP-IN WARRANTY SERVICE. If this occurs, your product will be restored to you configured as originally purchased. You will be responsible for restoring all applicable data and passwords. Recovery and reinstallation of user data is not covered under this Limited Warranty. In order to protect your personal information, VIZIO recommends that you always clear all personal information from the unit before it is serviced, regardless of the servicer.

FCC Class B Radio Interference Statement

NOTE: This equipment has been tested and found to comply with the limits for a Class B digital device, pursuant to Part 15 of the FCC Rules. These limits are designed to provide reasonable protection against harmful interference in a residential installation. This equipment generates, uses and can radiate radio frequency energy, and if not installed and used in accordance with the instructions, may cause harmful interference to radio communications. However, there is no guarantee that interference will not occur in a particular installation. If this equipment does cause harmful interference to radio or television reception, which can be determined by turning the equipment off and on, the user is encouraged to try to correct the interference by one or more of the following measures:

1. Reorient or relocate the receiving antenna.
2. Increase the separation between the equipment and receiver.
3. Connect the equipment into an outlet on a circuit different from that to which the receiver is connected.
4. Consult the dealer or an experienced radio/TV technician for help.

Notice:

1. The changes or modifications not expressly approved by the party responsible for compliance could void the user's authority to operate the equipment.
2. Shielded interface cables and AC power cord, if any, must be used in order to comply with the emission limits.
3. The manufacturer is not responsible for any radio or TV interference caused by unauthorized modification to this equipment. It is the responsibilities of the user to correct such interference.

RF Exposure Information

This device meets the government's requirements for exposure to radio waves. This device is designed and manufactured not to exceed the emission limits for exposure to radio frequency (RF) energy set by the Federal Communications Commission of the U.S. Government. This device complies with FCC radiation exposure limits set forth for an uncontrolled environment.

DHHS and FDA safety certification

This product is made and tested to meet safety standards of the FCC, requirements and compliance with safety performance of the U.S. Department of Health and Human Services, and also with FDA Radiation Performance Standards 21 CFR Subchapter J.

IC Statement

Operation is subject to the following two conditions:

1. This device may not cause interference, and
2. This device must accept any interference, including interference that may cause undesired operation of the device.

This Class B digital apparatus complies with Canadian ICES-003.

Cet appareil numérique de la classe B est conforme à la norme NMB-003 du Canada.

IC Radiation Exposure Statement

This equipment complies with IC RSS-102 radiation exposure limits set forth for an uncontrolled environment. This equipment should be installed and operated with minimum distance 20cm between the radiator & your body.

Copyrights

Because AACS (Advanced Access Content System) is approved as content protection system for BD format, similar to use of CSS (Content Scramble System) for DVD format, certain restrictions are imposed on playback, analog signal output, etc., of AACS protected contents. The operation of this product and restrictions on this product may vary depending on your time of purchase as those restrictions may be adopted and/or changed by AACS after the production of this product. Furthermore, BD-ROM Mark and BD+ are additionally used as content protection systems for BD format, which imposes certain restrictions including playback restrictions for BD-ROM Mark and/or BD+ protected contents. To obtain additional information on AACS, BD-ROM Mark, BD+, or this product, please contact an authorized Customer Service Center.

Many BD-ROM/DVD discs are encoded with copy protection. Because of this, you should only connect your player directly to your TV, not to a VCR. Connecting to a VCR results in a distorted picture from copy-protected discs.

This product incorporates copyright protection technology that is protected by U.S. patents and other intellectual property rights. Use of this copyright protection technology must be authorized by Macrovision, and is intended for home and other limited viewing uses only unless otherwise authorized by Macrovision. Reverse engineering or disassembly is prohibited.

Under the U.S. Copyright laws and Copyright laws of other countries, unauthorized recording, use, display, distribution, or revision of television programs, videotapes, BD-ROM discs, DVDs, CDs and other materials may subject you to civil and/or criminal liability.

Licenses

- Java and all Java-based trademarks and logos are trademarks or registered trademarks of Sun Microsystems, Inc. in the United States and other countries.
- Manufactured under license from Dolby Laboratories. Dolby and the double-D symbol are trademarks of Dolby Laboratories.
- Manufactured under license under U.S. Patent #'s: 5,451,942; 5,956,674; 5,974,380; 5,978,762; 6,487,535 & other U.S. and worldwide patents issued & pending. DTS and the Symbol are registered trademarks, & DTS 2.0+ Digital Out and the DTS logos are trademarks of DTS, Inc. Product includes software. © DTS, Inc. All Rights Reserved.
- HDMI, the HDMI logo and High-Definition Multimedia Interface are trademarks or registered trademarks of HDMI licensing LLC.
- “DVD Logo” is a trademark of DVD Format/Logo Licensing Corporation.
- This product is licensed under the AVC patent portfolio license and VC-1 patent portfolio license for the personal and non-commercial use of a consumer to (i) encode video in compliance with the AVC Standard and VC-1 Standard (“AVC/VC-1 Video”) and/or (ii) decode AVC/VC-1 Video that was encoded by a consumer engaged in a personal and non-commercial activity and/or was obtained from a video provider licensed to provide AVC/VC-1 Video. No license is granted or shall be implied for any other use. Additional information may be obtained from MPEG LA, LLC. See <http://www.mpegla.com>.
- Blu-ray Disc™, Blu-ray™, Blu-ray 3D™, BD-Live™, BONUSVIEW™, and the logos are trademarks of the Blu-ray Disc Association.

Open Source Software Notice

Your VIA device may contain GPL executables and LGPL libraries that are subject to the PL2.0/LGPL2.1 License Agreements. VIZIO offers to provide source code to you on CD-ROM for a processing fee covering the cost of performing such distribution, such as the cost of media, shipping and handling upon request made to VIZIO at www.vizio.com.

This offer is valid for a period of three (3) years from the date of the distribution of this VIA device by VIZIO. You can obtain a copy of the GPL, LGPL licenses from <http://www.gnu.org/licenses/old-licenses/gpl-2.0.html> and <http://www.gnu.org/licenses/oldlicenses/lgpl-2.1.html>. You can also obtain a copy of gSOAP public license from <http://www.cs.fsu.edu/~engelen/license.html>. Please visit www.vizio.com for attribution of copyrights to any open source software on your VIZIO VIA device. Permission is hereby granted, free of charge, to any person obtaining a copy of any such software and associated documentation files (the “Open Source Software”), to deal in the Open Source Software without restriction, including

without limitation the rights to use, copy, modify, merge, publish, distribute, sublicense, and/or sell copies of the Open Source Software, and to permit persons to whom the Open Source Software is furnished to do so, subject to the following conditions:

THE SOFTWARE IS PROVIDED “AS IS”, WITHOUT WARRANTY OF ANY KIND, EXPRESS OR IMPLIED, INCLUDING BUT NOT LIMITED TO THE WARRANTIES OF MERCHANTABILITY, FITNESS FOR A PARTICULAR PURPOSE AND NONINFRINGEMENT. IN NO EVENT SHALL THE AUTHORS OR COPYRIGHT HOLDERS BE LIABLE FOR ANY CLAIM, DAMAGES OR OTHER LIABILITY, WHETHER IN AN ACTION OF CONTRACT, TORT OR OTHERWISE, ARISING FROM, OUT OF OR IN CONNECTION WITH THE SOFTWARE OR THE USE OR OTHER DEALINGS IN THE SOFTWARE.

VIZIO Internet Applications (VIA) Policy

VIZIO Internet Applications (“VIA”) affords the opportunity to access third party Internet product offerings or services (“VIA Services”) on certain VIZIO devices incorporating the VIA functionality. The VIA Services accessible herein are provided as per our agreement with these third parties. These agreements are subject to change, interruption, suspension (including termination) at any time and for various reasons. VIZIO makes no warranties or representations that any particular VIA Service will be accessible, available, function in any particular manner or function at all.

Internet Access Required for VIA Services and Updates

To use these VIA Services, you must obtain high-speed/broadband access to the Internet (such as DSL, cable or T1 lines), either directly or through devices that access the Internet and pay any service fees associated with such access. In addition, you must provide all equipment necessary to make such connection to the Internet including a modem or other Internet access device. Each individual third party Internet product may require a different minimum Internet connection speed. The usability and availability of a functional VIA device and its Internet connected feature may highly be dependent and varied based on high-speed/broadband Internet access, connection speed, bandwidth, other equipment(s), third party applications, firmware updates and other factors outside of VIZIO’s control and/or responsibility which may also be independent of the actual operation of the device. It is further understood that VIA enabled devices are integrated with sophisticated technologies (software and hardware) which may exhibit delayed boot-up/shutdown time and/or interrupted services. You further understand that the VIA Services specifications and functionality are constantly evolving and that we may directly, or indirectly via third parties, update or change the VIA Services, in whole or in part, at any time and without notice to you. Such updates may be required for you to use certain aspects of the VIA services or to continue to connect to the VIA Services.

Availability of Content on VIA Services

VIZIO or said third parties providing VIA Services reserve the right to delete data from their servers, or prevent access to their servers or to change data categories, product offerings or service levels for any reason that VIZIO or said third parties deem sufficient in their sole discretion at any time, without notice. VIZIO may also impose additional or different limits on the use of or access to certain VIA Services, in any case and without notice or liability. Some or all of the data or functionality of VIA Services may require additional payment and/or subscription by you. However, in no event will you be charged for any VIA Services unless those charges are made known to you in advance. VIZIO makes no warranties or representations of any kind as to the accuracy, currency, or completeness of any information contained on the data servers of such third party providers of any VIA Services. Furthermore, we do not review, control, or endorse the content, products or services of VIA Services or their data servers.

VIA SERVICES ARE PROVIDED “AS IS” AND “AS AVAILABLE,” WITHOUT WARRANTY OF ANY KIND (INCLUDING ANY IMPLIED WARRANTY OF MERCHANTABILITY, NON-INFRINGEMENT, OR FITNESS FOR A PARTICULAR PURPOSE), TO THE MAXIMUM EXTENT PERMITTED BY LAW. USE OF THE VIA SERVICES IS AT YOUR SOLE RISK. THIS MEANS, FOR EXAMPLE, THAT VIZIO DOES NOT GUARANTEE THAT THE VIA SERVICES WILL ALWAYS WORK PROPERLY OR WORK AT ALL. THIS ALSO MEANS WE DO NOT GUARANTEE THAT THE VIA SERVICES, CONTENT OR PRODUCTS WILL BE FREE FROM VIRUSES, HACKS, OR OTHER POTENTIALLY HARMFUL INTRUSIONS. PLEASE NOTE THAT SOME STATES DO NOT ALLOW SUCH WARRANTY LIMITATIONS, SO THESE LIMITATIONS MAY NOT APPLY TO YOU.

VIA Services Content Disclaimer

Certain VIA Services may include materials from third parties or links to certain third party data servers. You acknowledge and agree that VIZIO is not responsible for examining or evaluating the content or accuracy of any VIA Services, their data servers or related third-party materials. VIZIO does not warrant or endorse and does not assume and will not have any liability or responsibility for any third-party materials or web sites, or for any other materials, products, or services of third parties. Links to VIA Services and any associated links to other data servers are provided solely as a convenience to you. To the extent provided, content types or descriptions of VIA Services are provided for convenience, and you acknowledge and agree that VIZIO does not guarantee their accuracy. You understand that by using any of the VIA Services, you may encounter content that may be deemed offensive, indecent, or objectionable, which content may or may not be identified as having explicit language. Nevertheless, you agree to use the VIA Services at your sole risk and that VIZIO shall have no liability to you for content that may be found to be offensive, indecent, or objectionable.

You agree that you will not use any third-party materials in a manner that would infringe or violate the rights of any other party, and that VIZIO is not in any way

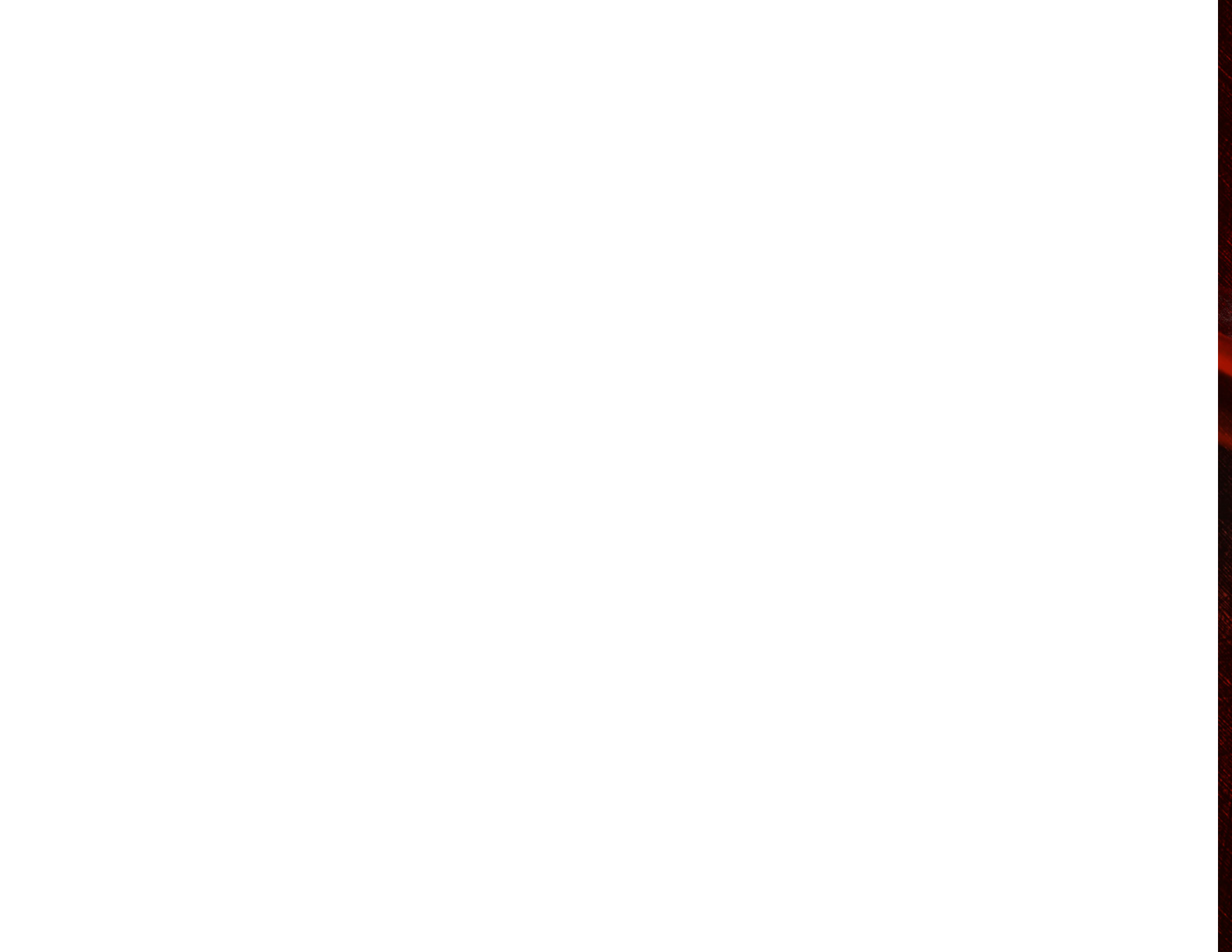
responsible for any such use by you.

VIZIO Privacy Policy and VIA Software License Agreement

Your right to use the widget links to access VIA Services is also governed by VIZIO’s Privacy Policy and the VIZIO Internet Applications Software License Agreement (“VIA Software License Agreement”), the terms of which are incorporated herein by this reference. The terms of both the Privacy Policy and VIA Software License Agreement may be found in your Product Guide and on VIZIO’s website. In the event of a conflict between the VIZIO Internet Applications (VIA) Policy and the VIA Software License Agreement, the VIA Software License Agreement shall control. BY YOUR USE OF THE VIA SERVICES, YOU EXPRESSLY AGREE TO ALL THE TERMS AND CONDITIONS OF THE FOREGOING POLICIES AND AGREEMENT.

VIZIO may change the terms and conditions of this VIA Policy, the VIZIO Privacy Policy and/or the VIA Software License Agreement, at any time and without prior notice. The most up to date versions are available on the Internet at: www.vizio.com. If you do not have Internet access, you should periodically contact our customer service department and we will mail you a current version, free of charge. IF YOU DO NOT AGREE TO ALL OF THE TERMS AND CONDITIONS OF THE VIA POLICY, THE VIZIO PRIVACY POLICY AND/OR THE VIA SOFTWARE LICENSE AGREEMENT OR ANY CHANGES THERETO, YOU MUST IMMEDIATELY CEASE USE OF THE VIA SERVICES.







ENTERTAINMENT FREEDOM FOR ALL

© 2012. ALL RIGHTS RESERVED. THE V, VIZIO, VIZIO INTERNET APPS, THEATER 3D, FULL ARRAY TRULED, EDGE LIT RAZOR LED, 240HZ SPS, 480HZ SPS, ENTERTAINMENT FREEDOM AND ENTERTAINMENT FREEDOM FOR ALL NAMES, LOGOS AND PHRASE ARE REGISTERED OR UNREGISTERED TRADEMARKS OF VIZIO, INC. OTHER LOGOS AND TRADEMARKS ARE THE PROPERTY OF THEIR RESPECTIVE OWNERS. SUBJECT TO CHANGE WITHOUT NOTICE.

120227ST-NC